

Riverton FAIR

Union Agricultural Society of
Barkhamsted, Colebrook & Hartland, Inc.



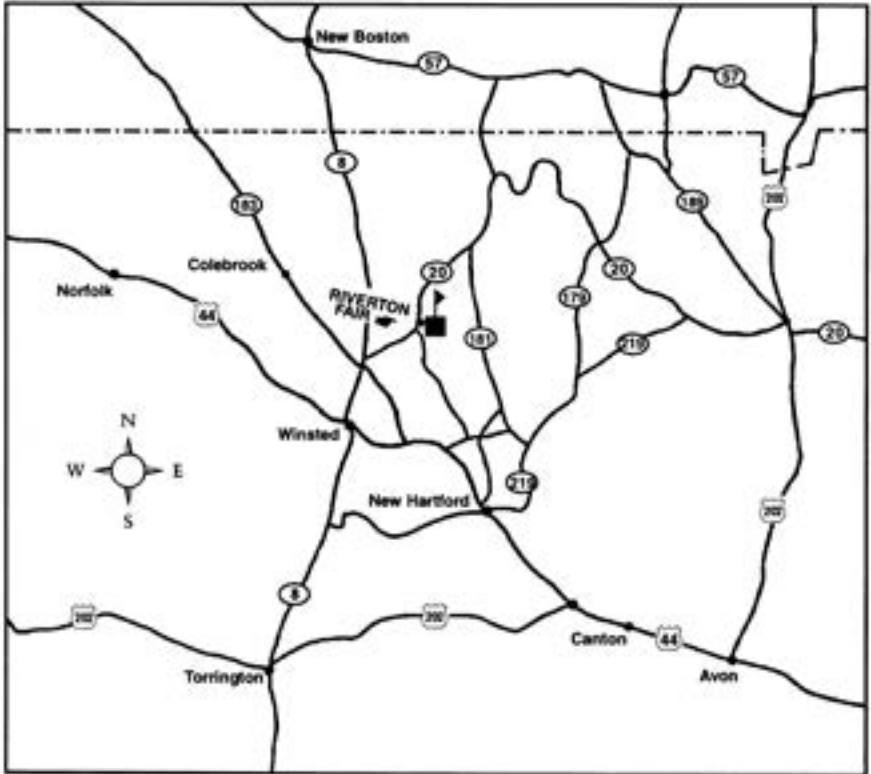
Friday • Saturday • Sunday
October 8 • 9 • 10, 2021



ALL ENTRIES POSITIVELY CLOSE SEPTEMBER 30

All roads lead to the
Riverton Fair

Riverton, Connecticut



Find us at
RivertonFair.org
and

Riverton Fair on Facebook
*for updates on events, vendors and
entertainment for this year's fair!*

2021 SCHEDULE OF EVENTS

Fair Hours	FRIDAY	4:00 PM - 9:00 PM
	SATURDAY	8:00 AM - 8:00 PM
	SUNDAY	8:00 AM - 5:00 PM

THURSDAY EVENING

3:00 PM - 7:00 PM Exhibits may be brought in

FRIDAY

9:00 AM - 4:00 PM Exhibits may be brought in

4:00 PM

Exhibits must be in place

Fair opens / Midway is closed to vehicles

6:00 PM

Garden Tractor Pulls begin

4:00 PM - 9:00 PM

Amusements & Rides open

Ride Bracelets available good from 4 PM - 9 PM

SATURDAY

10:00 AM Lumberjack Competition

10:30 AM Judging of Exhibits begins

Showing of Oxen and Steers

Noon - 8:00 PM

Amusements Rides open

Ride Bracelets available good from Noon - 8 PM

1:00 PM

Oxen Drawing

3:00 PM

Pie Eating Contest - Youth & Adult

4:00 PM

Bicycle Drawing on the Bandstand

6:30 PM

Riverton Fair Women's Skillet Throw

SUNDAY

10:00 AM Lumberjack Competition

11:00 AM Showing of Junior Dairy

Noon - 5:00 PM

Amusements & Rides open

Ride Bracelets available good from Noon - 5 PM

1:00 PM

Oxen Drawing

Approx. 2:00 PM

Women's Skillet Throw Finals

3:00 PM

Pie Eating Contest - Youth & Adult

4:00 PM

Bicycle & Hitchcock Drawing on the Bandstand

5:00 PM

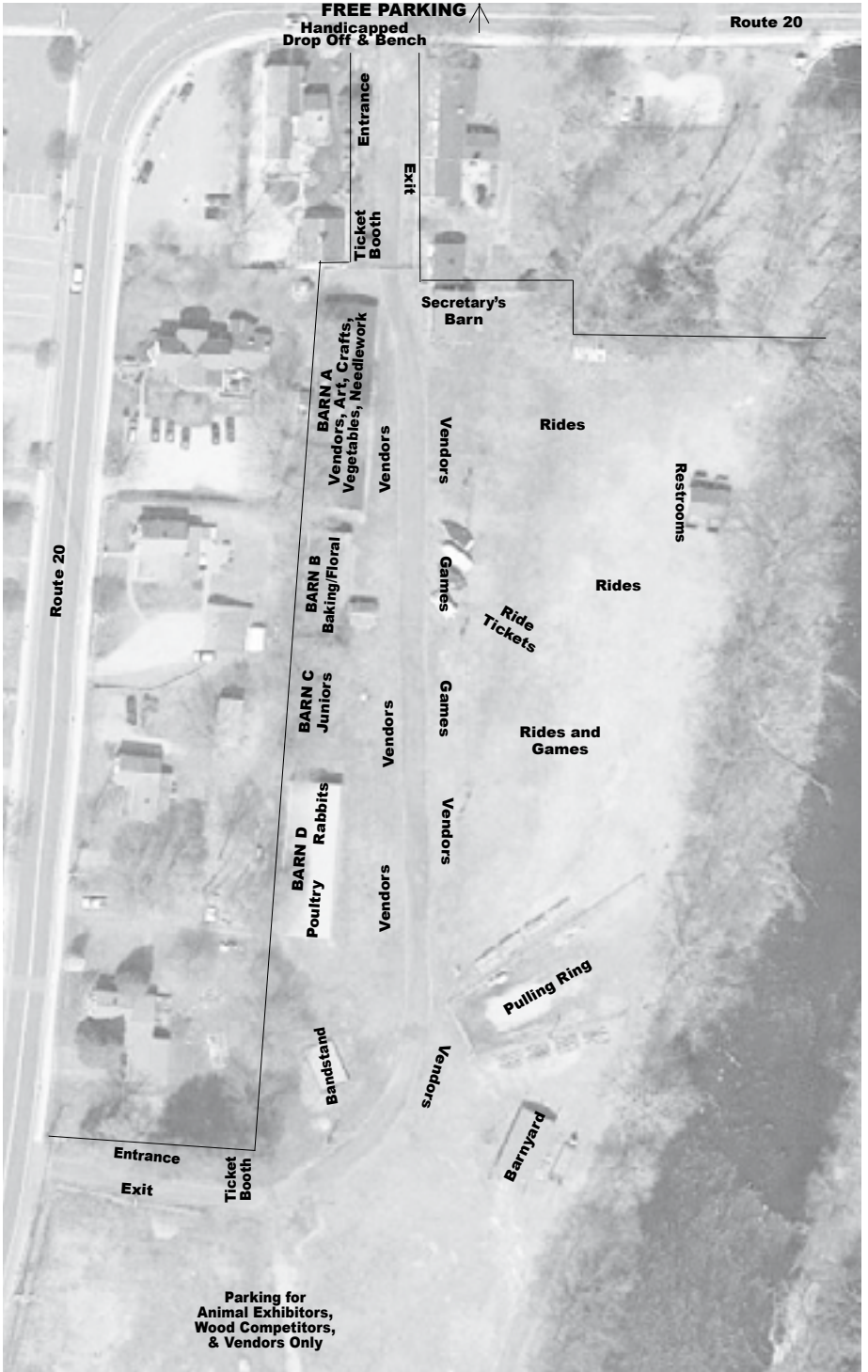
Fair closes for 2021

5:30 PM

Midway opens for removal of exhibits

INDEX

Fair Hours and Schedule		Page 1
Fairgrounds Map		Page 3
General Rules		Page 4-5
Entry Instructions		Page 6
Entry Form		Pages 7-8
Litchfield County Council of Fairs Contest		Page 9
State Quilt Contest Rules		Page 10
State Baking Contests / Rules & Recipes		Pages 11-14
Oxen and Steers	Division A	Pages 15-16
Junior Dairy	Division B	Pages 17-18
Rabbits and Cavies	Division E	Pages 19-21
Vegetables	Division F	Pages 22-25
Field & Seed Crops	Division G	Page 26
Fruits	Division H	Page 27
Bread and Pastry	Division I	Pages 28-29
Canned Goods	Division J	Pages 30-32
Needlework	Division I	Pages 33-35
Riverton Fair Banner Contest		Page 36
Floral	Division J	Pages 37-38
Arts & Crafts / Adult Photo	Division M	Pages 39-40
Youth Photo / Ages 9-15	Division N	Page 41
Junior Dept. / Ages 9-15	Division N	Pages 42-48
Youth State Quilt Contest Rules		Page 44
Junior Dept. / Ages 8 & under	Division O	Pages 42-48
Jack O'Lantern Contest - Adult & Youth		Page 49
Scarecrow Contest - Adult & Youth	Division P	Page 49
Poultry	Division Q	Page 50-52
Grange & Club Exhibits	Division R	Page 53
Woodchopping, Sawing, Axe	Division S	Page 54
Pie Eating Contest - Adult & Youth		Page 54
Garden Tractor Pull	Division T	Pages 55-56
Women's Skillet Throws		Page 57
Officers and Superintendents for 2021		Page 58



Union Agricultural Society of Barkhamsted, Colebrook, and Hartland, Inc.

GENERAL RULES & REGULATIONS

Upon entering any exhibit or competition in the Riverton Fair the exhibitor acknowledges that The Society will assume no responsibility for any loss, injury or damage to any exhibits, and that the exhibitor is responsible for any loss, injury or damage done by their animal while on the grounds.

All articles and animals exhibited must be bona fide property of exhibitor. All vegetables, produce, fruits, flowers, etc. must be grown by exhibitor.

All entries must be in place by 4:00 PM on Friday unless otherwise specified.

It must be understood that all exhibits (except oxen, dairy cattle, bread & pastry/cakes) are on exhibit for the three days of the fair. Ample security is provided for the safety of the exhibits overnight.

All exhibits must remain in place until 5:00 PM on Sunday.
The midway will open at 5:30 for vehicles to pick up exhibits.

All vehicles must be off the midway by 4:00 PM Friday when the fair opens.

No pets or alcoholic beverages are allowed on the fairgrounds.

Exhibitors must not talk to or interfere in any way with the judges or committee while the exhibits are being judged.

All protests in regards to award of prizes must be made in writing to the Secretary within three days after the fair. The Executive Committee will give full consideration to such matters at the earliest possible date.

All cattle and oxen shall have a rabies vaccination given by a veterinarian at least 30 days prior to their first show date with a vaccination certificate signed by the veterinarian that gave the vaccination indicating the name of the vaccine and the serial number.

All livestock entries must abide by all of the 2021 CONNECTICUT FAIR AND SHOW REQUIREMENTS. Full copy available online at www.ct.gov/doag

LIFE MEMBERSHIPS

Lifetime Memberships to the Union Agricultural Society of Barkhamsted, Colebrook and Hartland, Inc. are available, entitling the member to a certificate of membership, participation in work parties, two admission tickets per year, and voting privileges at the annual meeting. Contact the secretary for requirements.

**ABSOLUTELY NO MEMBERSHIPS WILL BE PROCESSED BETWEEN
SEPTEMBER 1 AND DECEMBER 1.**

COMMITTEES

All persons appointed to committees are requested to be on the grounds by 8:00 AM to take charge of their department(s), care for the exhibits, answer questions from the public and assist the Judges.

JUDGES

All Judges are requested to report at the Secretary's Office by 10:00 AM the day(s) of judging to receive their judging sheets to they may commence their judging duties.

Judges must write each award opposite exhibitor's name or number on the judging sheets and have assistant place appropriate ribbons on the articles or cages immediately after the decision is made.

PREMIUMS

The Judges are authorized to withhold any prizes where, in their opinion, the exhibit does not meet their judging standards.

Should the receipts be insufficient to pay expenses, the premiums will be subject to a pro rata reduction.

Premiums will be paid by check on or before December 1st.

You may decline to receive premiums awarded to you by checking the box on your entry form or by notifying the Secretary by November 1. Your generosity is greatly appreciated and the funds will be put to good use on upkeep and improvements.

All checks in payment for premiums must be cashed within six months of issue. They will not be cashed by any bank after six months and will be considered donations to the Society, and therefor erased as an obligation of the Society.

ENTRIES

Because all forms (exhibit tags, exhibitor passes, judges sheets, etc.) to do with entries are computer-generated and inter-related

ALL ENTRIES POSITIVELY CLOSE SEPTEMBER 30.

This rule must be strictly adhered to.

**Also, because the fair officially opens at 4:00 PM on Friday
ALL EXHIBITS MUST BE IN PLACE BEFORE 4:00 PM FRIDAY.**

**Exception: Flowers and Bread/Pastry only from 8-9 AM on Saturday
and Cakes/Pies only from 8-9 AM on Sunday.**

**Our staff will be available for exhibits to be brought in:
Thursday from 3:00-7:00 PM and Friday from 9:00 AM to 4:00 PM.**

You may contact Christine Schmidt, Fair Secretary at
RivertonFair@gmail.com with questions.

GUIDELINES FOR EXHIBITORS

- **ALL ENTRIES MUST BE RECEIVED BY SEPTEMBER 30. NO ENTRIES WILL BE ACCEPTED AFTER THAT DEADLINE.**
- Entry forms must be complete with Division, Department, Variety and Exhibit Description. See sample below.
- **Admission fee of \$7.00** must accompany Entry Form (no admission fee required for juniors 12 and under, or for Fair Life Members).
- Items which have not been pre-entered and issued an entry tag will not be accepted for judging. No substitutions permitted. Absolutely no new entries can be accepted on Fair Days.
- Entries may be delivered to the Fairgrounds between the hours of 3 PM and 7 PM on Thursday, or Friday between 9 AM and 4 PM. **ALL ENTRIES MUST BE IN PLACE BY 4 PM FRIDAY** except Flowers, Bread/Pastry, and Cakes/Pies.
- **ALL ENTRIES MUST REMAIN IN PLACE UNTIL 5 PM SUNDAY.**

FILLING OUT THE ENTRY FORM

- For each item entered, specify **Division** (letter code)
Department (number code)
Variety (number code if applicable)
Description (identifying the item)
- All pertinent information must be included to insure that the item is correctly coded for judging.
- Riverton Fair is not responsible for items incorrectly classified by exhibitor.
- No changes in classification will be made on Fair Days.
- Please print legibly. Make sure to include your phone number and/or email in case of questions for clarification.

We process well over one thousand entries and make every attempt to do each one correctly, but we are not perfect! **Please check your entry tags upon receipt. If there are errors, contact the Fair Secretary immediately for corrections. Judging sheets are printed in advance and it is not possible to make correction on the Fair Days.**

SAMPLE ENTRY FORM

Fill in all contact info, then ...

Div.	Dept.	Variety, Breed, Kind, Class	Item Description
<i>E</i>	<i>6</i>	<i>1</i>	<i>Carrots, long</i>
<i>F</i>	<i>7</i>	<i>2</i>	<i>White eggs</i>
<i>J</i>	<i>3</i>		<i>Embroidered Towel</i>
<i>G</i>	<i>3</i>	<i>3</i>	<i>Plate Empire Apples</i>

ENTRY FORM RIVERTON FAIR OCT. 2021

All entries must be in to the Secretary no later than September 30

RABBIT/CAVY entries must go directly to

Kate Fitzgerald, 34 Millard St., Torrington, CT 060790

POULTRY entries must go directly to

Donald Keesler, Jr., 309 Birge Park Rd., Harwinton, CT 06791

Adult Exhibitors and Junior Exhibitors over the age of 12 -
Admission Fee of **\$7.00** must accompany Entry Form.

Send to Riverton Fair, PO Box 303, Riverton, CT 06065

RIVERTON FAIR WAIVER AND INDEMNITY AGREEMENT

As a condition of entry, I hereby waive any claim for damages to my person or property which may arise against the Union Agricultural Society or Riverton Fair as a result of the participation by myself, my agent or employees or any livestock owned or entered by me; and I further agree to indemnify and save harmless the Union Agricultural Society or Riverton Fair against all claims, demands, suits and expenses arising out of an injury to any person or damage to any property caused by my livestock, personal property, agents, employees, members of my family or myself.

Juniors must enter age _____. _____ Life Member

Name of Exhibitor _____

Mailing Address _____

Telephone _____

E-mail _____

SECRETARY'S USE ONLY

EXH. # _____

The ribbons and participation are rewarding enough. Please keep any premiums I win this year to be used to benefit the Fair.

Div.	Dept.	Variety, Breed, Kind, Class	Item Description

LITCHFIELD COUNTY COUNCIL OF FAIRS 2021 CONTEST

...

ANIMAL FRIEND ACCESSORY MADE FROM RECYCLED MATERIAL



WHO MAY ENTER: Contest is open to all residents of Connecticut. Prizes will be awarded in two divisions at each fair: Youth (up to age 15) and Adult (age 16 and over).

LOCAL CONTEST: Exhibits may be entered at any fair which is a member of the Litchfield County Council of Fairs. Contestants may enter their exhibit as often as they wish UNTIL they win first prize. At that time they will be representing that fair at the Litchfield County Council of Fairs Contest in the Fall. If it is found that the contestant has entered and won in more than one Litchfield County Fair, they will be disqualified from participating in the Litchfield County Council of Fairs Contest in the Fall of 2021.

COUNTY CONTEST: Representative winners from each fair for both junior and senior divisions will be eligible to enter their exhibit in the County Contest held at the Fall meeting of the Litchfield County Council of Fairs on Wednesday, October 27, 2021. Entries must be in place by 6:30 PM to be judged.

COUNTY PRIZES: Rosettes and cash prizes will be awarded in each division:

1st Place \$25	3rd Place \$15	5th Place \$ 5
2nd Place \$20	4th Place \$10	6th, 7th, 8th, 9th Places Rosette

JUDGING: Workmanship, 30% Practicality, 30%;
Originality, 20% Suitability of Materials, 20%

CONTEST RULES:

Item must fit within 18" x 18" x 18".

Must be made up from 90% recycled materials safe for use with animals.

INFORMATION: The Riverton Fair is responsible for this year's contest. Please contact Christine Schmidt at RivertonFair@gmail.com with any questions.

ADULT STATE QUILT CONTEST

Categories:

1. Hand Appliqué
2. Pieced -- Machine Quilted
3. Pieced -- Hand Quilted

Contest Rules:

1. This contest is open to all residents of Connecticut.
2. All work must be completed by an individual quilt maker.
3. Work can be pieced by hand or by machine but applique must be done by hand.
4. Quilts must be hand or machine quilted. No hand tied quilts.
5. Quilts may not be made from pre-cut quilt kits.
6. A quilt can only compete in the Association of Connecticut Fairs quilt contest once.
7. Applique quilts must consist of at least 50% applique.
8. Quilt perimeter must measure a minimum of 216 inches.
9. No wall hanging quilts.

HOW TO ENTER: Enter a quilt at any participating fair that is a member of the Association of Connecticut Fairs.

The participating fair will award one winner in each category with a rosette from the Association of Connecticut Fairs along with any awards the local fair provides. Each fair will submit that winning entry to the state contest. A quilt can be entered in as many fairs as a contestant wishes until it becomes eligible to go to the state contest.

STATE QUILT CONTEST: Once a quilt has won the State Quilt ribbon at a participating fair, it is eligible to be entered at the State Quilt Contest. The contest will be held November 6, 2021 at Double Tree by Hilton in Bristol, CT. The Fair secretary will contact the winner with information and will place reservations. The Riverton Fair will pay for its contest winner's banquet ticket. The contest winner is responsible for the cost of any additional tickets for guests to attend.

The following prizes will be awarded in each category at the state contest:

1st Place: \$50.00 2nd Place: \$35.00 3rd Place: \$15.00

There will be also be a Peoples' Choice Award. Each Banquet attendee will be able to cast one vote for their favorite quilt regardless of category. This award will be \$50.00.

QUILT OF VALOR WORKSHOP

November 6 at Double Tree by Hilton in Bristol, at the State Quilt Contest, there will be a workshop from 9:30 am to 4:30 pm for any quilter to help complete a Quilt of Valor which will be presented at the banquet. This is a free event but registration is requested. Email your name, address, phone & email to Quilts@CTAgFairs.org. Bring sewing machine, scissors, extension cord, thread, ruler and patriotic fabric (optional).

Any questions may be directed to Debbie Bellemare at 860-349-8248 or by email at Quilts@CTAgFairs.org

2021 Baking & Pie Contest Rules

WHO MAY ENTER: The contest at each member fair is open to all men, women and juniors who are residents of Connecticut. Commercial, industrial or professional bakers are not eligible. Junior Baking (ages 7 to 15 as of July 1st). Adult Baking (age 16 and over).

HOW TO ENTER: Any Connecticut resident entering a contest at any member fair is automatically entered and competing in the local contest. Contestants may enter the contest at as many fairs they wish until they win first prize. They will then represent that fair at the state baking contest. Please submit entries to both the local and state contest on disposable plates. The Association of Connecticut Fairs and the local fairs are not responsible for the return of the plates, trays or containers.

JUDGING: The judging will be based on appearance, flavor and texture. The Association of Connecticut Fairs will furnish judges' score sheets to each fair and the contestant will receive these sheets at the end of the contest. Additions, deletions or substitutions in the recipe is not permitted and will result in disqualification. All decisions of the judges are final.

LOCAL CONTEST: The winner of the local contest will receive a blue ribbon from The Association of Connecticut Fairs and will then become eligible to submit their entry at the state contest. In the event that only one entry is received at the local contest and that entry is worthy of first prize, that entry must be awarded the first place ribbon.

STATE CONTEST: The state contest is held as part of the Fall Meeting and Convention of the Association of Connecticut Fairs. Entries for the state contests are accepted between **8:00am and 10:00 am** on the day of the judging. Reservations must be made through the Fair secretary. Riverton Fair will pay for its contest winner's banquet ticket. The contest winner is responsible for the cost of any additional tickets for guests to attend. Contest winners are announced on the day of the contest. All entries to the state contest become property of the Association of Connecticut Fairs and are not returned.

NO BANQUET RESERVATIONS FOR CONTEST WINNERS ACCEPTED AT THE DOOR.

This year's baking recipes were selected to commemorate the 400th Anniversary of the Mayflower's Voyage and Founding of Plimoth Plantation. The recipe includes ingredients such as rye flour, corn flour, and cornmeal, that would have been used in the early 1600s.

For 2021 we are celebrating the First Thanksgiving.



The voyage of the Mayflower took 66 days with 103 passengers aboard. Two babies were born aboard the Mayflower – Oceanus Hopkins and Peregrine White.

The Mayflower Compact was written and signed by all adult male passengers. This document created a Civil Body Politik which is a foundation of the Constitution of the United States of America.

Plimoth Plantation was the first permanent colony in the New World. The event that Americans commonly call the "First Thanksgiving" was celebrated by the Pilgrims after their first harvest in the New World in October 1621. This feast lasted three days, and was attended by 90 Wampanoag and 53 Pilgrims.

Association of Connecticut Fairs • CT.AgFairs.org
2021 ADULT STATE BAKING CONTEST

Plimoth Thirded Bread

STARTER INGREDIENTS

1/3 cup water
2/3 cup King Arthur All-Purpose Flour
One packet of active dry yeast

In medium to large bowl dissolve yeast in water then stir in flour. Let rest until bubbly (10 min-1 hour)

ADDITIONAL INGREDIENTS

1/3 cup whole wheat flour
1/4 cup rye flour 2 1/4 cups King Arthur All-Purpose flour
1/3 cup cornmeal 1 teaspoon salt
1/3 cup corn flour 1 1/3 cup water



Mix flours and cornmeal with salt and add to starter.
Add water slowly, mixing while adding, until combined.

Cover and place dough in refrigerator for 8-12 hours. Remove from refrigerator and let rest for 15-20 minutes to come to room temperature. On floured surface stretch and fold. Return to refrigerator and let rest 1 hour (or leave at room temperature and rest 15-30 minutes) then on floured surface stretch and fold again. Return to refrigerator and let rest 1 hour (or leave at room temperature and rest 15-30 minutes) then on floured surface stretch and fold for the third and final time. After final fold, rest 15-20 minutes at room temperature, then shape into round loaf and place top side DOWN in bowl oiled with vegetable/canola oil. Proof (let rise) for 40 minutes to 1 hour.

Heat oven to 450 degrees F. Grease an 8-9 inch (measured at the top inside edge) Dutch Oven or Casserole Dish (CorningWare) with vegetable/canola oil. Flip dough into Dutch Oven or Casserole Dish (CorningWare). Cover and bake for 20 minutes. Remove lid and bake for another 20-25 minutes, checking for doneness by knocking on loaf and waiting to hear a hollow sound. When done, let sit on colling rack at least one hour.

Submit loaf on foil-covered cardboard no wider than one inch from side of loaf.

JUDGING CRITERIA:

Overall appearance	25 points
Following Directions	10 points
Texture	15 points
Aroma	10 points
Flavor	<u>40 points</u>
TOTAL	100 points

The following prizes will be awarded at the state contest plus a Rosette.

1st Place: \$40.00	5th Place: \$15.00	8th Place: \$7.50
2nd Place: \$35.00	6th Place: \$12.50	9th Place: \$5.00
3rd Place: \$30.00	7th Place: \$10.00	10th Place: \$5.00
4th Place: \$25.00	Honorable Mention Ribbons will also be awarded.	

Association of Connecticut Fairs • CT.AgFairs.org
TWO-CRUSTED APPLE PIE CONTEST



CONTEST RULES

1. Each pie must be a 9" (measured at the top inside edge of the dish)
Two-Crust Pie. **NO LATTICE TOPS**
2. Submit a 3" x 5" card with your recipe, your name and address.
3. No pre-made or pie mixes will be allowed.
4. The main ingredient must be apples. However, pies may include other fruits or ingredients.
5. Failure to adhere to these rules will **disqualify** the entered pie from the competition.
6. All pies become the property of the Association of Connecticut Fairs (baking dishes will not be returned).

JUDGING CRITERIA

Overall Appearance	40 points
Crust	10 points
Flavor	40 points
Texture	<u>10 points</u>
TOTAL	100 points

For any questions, please email: LSkornia@optimum.net
Laurie Skornia. 203-464-0933

PRIZES

The following prizes will be awarded at the state contest plus a Rosette.

1st Place: \$40.00	5th Place: \$15.00	8th Place: \$7.50
2nd Place: \$35.00	6th Place: \$12.50	9th Place: \$5.00
3rd Place: \$30.00	7th Place: \$10.00	10th Place: \$5.00
4th Place: \$25.00		

Honorable Mention Ribbons will also be awarded.

CT.AgFairs.org

Association of Connecticut Fairs • CT.AgFairs.org
2021 JUNIOR STATE BAKING CONTEST

...

MOLASSES CORNBREAD



INGREDIENTS

Muffins:

- 1 1/4 cups King Arthur All-Purpose Flour
- 2 1/2 teaspoon baking powder
- 3/4 teaspoon salt
- 14 teaspoon baking soda
- 1 1/4 cups stone-ground yellow cornmeal
cornmeal
- 3 tablespoons sugar

- 1 1/4 cups whole milk
- 1/4 cup unsulfured molasses
- 1 large egg
- 1 1/4 sticks (10 tablespoons)
unsalted butter, softened

DIRECTIONS

1. Preheat the oven to 400 degrees F.
2. Butter an 9"x5"x3" loaf pan.
3. Into a large bowl sift together flour, baking powder, salt and baking soda. Whisk in cornmeal and sugar until combined well.
4. In a bowl whisk together milk, molasses, and egg until just combined.
5. Add butter to flour mixture and with an electric mixer or by hand, beat until mixture resembles fine crumbs.
6. Beat in milk mixture until just combined.
7. Pour batter into pan and bake in middle of oven 35 minutes or until a toothpick comes out clean.
8. Cool cornbread in pan on a rack 10 minutes.
9. Turn out onto rack to cool completely.

Submit entire loaf on foil-covered cardboard no larger than one inch from side of loaf.

JUDGING CRITERIA

Overall Appearance	25 points
Following directions	10 points
Texture	15 points
Aroma	10 points
Flavor	<u>40 points</u>
TOTAL	100 points

PRIZES

Following prizes will be awarded at the state contest plus a Rosette.

1st Place: \$20.00	6th Place: \$12.50
2nd Place: \$15.00	7th Place: \$10.00
3rd Place: \$10.00	8th Place: \$ 7.50
4th Place: \$ 7.50	9th Place: \$ 5.00
5th Place: \$ 5.00	10th Place: \$ 5.00

Honorable Mention Ribbons

Division A - OXEN & STEERS

Darcy Anderson-Abbott, Ron Abbott, Willi Schmidt

SHOWING

Oxen and Steers will be judged on **Saturday only.**

Judging will begin at 10:30 AM

Register in the Secretary's Barn by 10:00 AM

Must have health clearance papers available upon request.



Dept. 1 Holsteins

Dept. 2 Brown Swiss

Dept. 3 Durhams, Herefords

Dept. 4 Devons

Dept. 5 Guernseys, Jerseys
Charolais, Ayrshires

Dept. 6 Chianinas

Dept. 7 Mixed Breeds

Class

	First	Second	Third
1 Pair Steer Calves, under 6 months	\$12.00	\$ 6.00	\$ 4.00
2 Pair Steer Calves, over 6 months	\$12.00	\$ 6.00	\$ 4.00
3 Pair one year old Steers	\$12.00	\$ 6.00	\$ 4.00
4 Pair two year old Steers	\$16.00	\$10.00	\$ 6.00
5 Pair three year old Steers	\$16.00	\$10.00	\$ 6.00
6 Pair four year old Steers	\$16.00	\$10.00	\$ 6.00
7 Pair Oxen, five years or over	\$16.00	\$10.00	\$ 6.00

Dept. 8 SWEEPSTAKES

1 Pair of Steers, under four years old	\$12.00
2 Pair of Oxen, four years old or over	\$12.00

Dept. 9 BEST TRAINED CATTLE

By Boy or Girl 18 Years or Under

First \$20.00	Second \$14.00	Third \$10.00	Fourth \$ 6.00
---------------	----------------	---------------	----------------

The Donald E. Birden Memorial Trophy

The Donald Jespersen Memorial Trophy

OXEN DRAWING

Drawing will begin at 1:00 PM on Saturday and Sunday.

Please register in the Secretary's Barn by 11:00 AM each day.

Any offensive language or behavior or actions deemed to not be in the best interest of the fair, at any time while on the fairgrounds, will disqualify the contestant and any premiums due will be forfeited.

The committee reserves the right to decline acceptance of the entry of any team, or owner, when in the opinion of the committee, it would not be in the best interest of the fair to do so.

SATURDAY

<u>Pair of Oxen</u>	<u>1st</u>	<u>2nd</u>	<u>3rd</u>	<u>4th</u>	<u>5th</u>	<u>6th</u>	<u>7th</u>	<u>8th</u>
2401-2799 lbs.	\$95	\$85	\$75	\$65	\$55	\$45	\$30	\$20
2800-3199 lbs.	\$100	\$90	\$80	\$70	\$60	\$40	\$30	\$20
3200+ lbs.	\$125	\$100	\$90	\$80	\$70	\$60	\$30	\$25

SUNDAY

<u>Pair of Oxen</u>	<u>1st</u>	<u>2nd</u>	<u>3rd</u>	<u>4th</u>	<u>5th</u>	<u>6th</u>	<u>7th</u>	<u>8th</u>
up to 2000 lbs.	\$85	\$75	\$65	\$55	\$45	\$30	\$20	\$15
2001-2399 lbs.	\$90	\$85	\$75	\$65	\$50	\$40	\$30	\$20

Five dollars will be paid for each pair of oxen/steers brought to compete.

Current Rules of the CT Ox Drivers and Owners Association will govern the contest, including Rule #34:

"For any situations that may arise and are not covered by these rules, the decision will be left to the discretion of the committee."



Division B - JUNIOR DAIRY CATTLE

George Wilber, Calvin Tanner, Jann Tanner, Meg Tanner, Wendy Kennedy

Dairy Cattle will be judged on **Sunday only**.

Competition is open to individuals 18 years of age and under.

All Junior Dairy must pre-register by mail by September 30

Judging will begin at 11:00 AM

Must have health clearance papers available upon request the day of judging

2021 RULES

- 1. Cattle shall originate from herds that meet the testing and health requirements of the State of CT. Proof of compliance with state requirements may be requested by state livestock inspectors. See Dept. of Agriculture General Health Requirements.**
2. Exhibitors must have original health charts, or vaccinations certificates to show their stock at CT fairs and shows **upon arrival**.
3. **Connecticut cattle:** All cattle must have a health certificate issued within 60 days of their first show by an accredited veterinarian stating that the animal is in good health and free of infectious disease.
4. **Out-of-state cattle:** All cattle must have health certificates issued within 30 days of the first show by an accredited veterinarian, test charts and vaccination certificates where applicable. All cattle over 3 months of age must have a negative TB test within 12 months prior to show date. Cattle under 3 months of age may go on the dam's TB test chart if the dam was tested for TB within the past 12 months and a copy of the results is provided. All brucellosis-vaccinated female cattle over 18 months of age and all bulls and non-vaccinated female cattle 6 months of age and older must have a negative brucellosis test within 12 months prior to their first show date. Steers and spayed heifers are exempt from brucellosis testing.
5. **Animals not complying with above regulations will be removed from the fairgrounds. The committee chairman will check all exhibitors for their health charts which must be in compliance with all regulations.**
6. **All animals must have a registration paper. Animals must be registered in exhibitor's name or junior exhibitors must provide lease papers. No pending paperwork allowed. Certificates must be brought to the fair and presented to the committee.**
7. ALL LEASED junior show animals:
 - A. Must have a 4-H lease. No cows allowed over 2 years old unless leased as a calf or yearling. Must provide proof of prior lease.
 - B. Maximum of 2 leases.

All livestock entries must abide by all of the 2021 CONNECTICUT FAIR AND SHOW REQUIREMENTS. Full copy available online at www.ct.gov/doag

All exhibitors are legally responsible for any loss, injury or damage done by their animal while on the grounds.

Dept. 1 AYRSHIRE
Dept. 2 BROWN SWISS
Dept. 3 GUERNSEY

Dept. 4 HOLSTEIN
Dept. 5 JERSEY
Dept. 6 MILKING SHORTHORN

Class	<u>First</u>	<u>Second</u>	<u>Third</u>	<u>Fourth</u>		
1 Spring Calf born 3/1/21 to 5/31/21	\$20.00	\$15.00	\$10.00	\$ 5.00		
2 Winter Calf born 12/1/20 to 2/28/21	\$20.00	\$15.00	\$10.00	\$ 5.00		
3 Fall Calf born 9/1/20 to 11/30/20	\$20.00	\$15.00	\$10.00	\$ 5.00		
4 Summer Yearling born 6/1/20 to 8/31/20	\$20.00	\$15.00	\$10.00	\$ 5.00		
5 Spring Yearling born 3/1/20 to 5/31/20	\$20.00	\$15.00	\$10.00	\$ 5.00		
6 Winter Yearling born 12/1/19 to 2/28/20	\$20.00	\$15.00	\$10.00	\$ 5.00		
7 Fall Yearling born 9/1/19 to 11/30/19	\$20.00	\$15.00	\$10.00	\$ 5.00		
8 Two Year Old born 9/1/18 to 8/31/19	\$20.00	\$15.00	\$10.00	\$ 5.00		
9 Three Year Old born 9/1/17 to 8/31/18	\$20.00	\$15.00	\$10.00	\$ 5.00		
10 Aged Cow born before 9/1/16	\$20.00	\$15.00	\$10.00	\$ 5.00		
11 Dry Cow - must have calved within past 18 months	\$20.00	\$15.00	\$10.00	\$ 5.00		
12 Dam & One Daughter	\$20.00	\$15.00	\$10.00	\$ 5.00		
13 Best Animal bred & owned by a Junior Exhibitor	\$20.00	\$15.00	\$10.00	\$ 5.00		
SHOWMANSHIP	<u>1st</u>	<u>2nd</u>	<u>3rd</u>	<u>4th</u>	<u>5th</u>	<u>6th</u>
16 Novice Showmanship <i>First year showmanship under age of 11</i>	\$10	\$8	\$6	\$4	\$3	\$2
17 Junior Showmanship <i>Ages 7 - 12</i>	\$10	\$8	\$6	\$4	\$3	\$2
18 Intermediate Showmanship <i>Ages 13- 15</i>	\$10	\$8	\$6	\$4	\$3	\$2
19 Senior Showmanship <i>Ages 16 - 18</i>	\$10	\$8	\$6	\$4	\$3	\$2

Ribbons awarded for: Junior Champion
Reserve Junior Champion
Senior Champion
Breed Champion
Grand Champion
Reserve Grand Champion

RIVERTON FAIR DAIRY COMMITTEE MEMORIAL TROPHY

Division E - RABBITS & CAVIES

Kate Fitzgerald, Superintendent - 203-558-2148

Sierra Fitzgerald, Show Secretary

Committee: Parker Fitzgerald, Ann Kratzer, Brianna Kratzer,
Dave Kratzer, Emily Kratzer, Sophia Kratzer, Brianna Lauzon,
Dustin Legeyt

MAIL ENTRY FORMS AND CHECKS DIRECTLY TO:
Kate Fitzgerald, 34 Millard St., Torrington, CT 06790
Entries close September 30 or as cages are filled.
NO PHONE ENTRIES WILL BE ACCEPTED.

ENTRY FEES:

ADULTS - **\$7.00** for maximum of three entries. Adults will pay 50 cents for each additional animal over three, or for one meat pen consisting of three animals, not over 69 days old, and not over 5 pounds each.

JUNIORS - All Juniors - under 12 years of age - will pay 50 cents per animal.

Make all checks payable to the Riverton Fair. DO NOT SEND CASH!

ENTRY TAGS:

Entry tags will be attached to cages by the committee.

EXHIBIT DELIVERY:

Deliver to Barn D THURSDAY from 5 to 9 p.m. ***NO EXCEPTIONS.***

CAVIES AND RABBITS MUST REMAIN UNTIL 5:00 PM SUNDAY

RULES AND REGULATIONS:

1. This is an A.R.B.A. Sanctioned Show, but Pet Stock will be accepted. Entries will be accepted until cages are full.
2. All entered in the ARBA Show must have a permanent tattoo or tag in left ear. The number must be listed on the entry form or entry will be placed in the Pet Category.
3. Feed will be supplied by the Fair. Only committee members are to feed animals.
4. Rabbits will be accepted Thursday from 5 to 9 p.m. NO EXCEPTIONS.
5. Judging will start at 4:00 p.m. Friday, or at the convenience of the Judge.
6. ***Sick or diseased animals will not be admitted and will be removed from cages if noticed after admission, or disqualified if found to be diseased by Judge.***
7. No exhibitor or interested parties will be allowed in back of judging tables. Interference with Judge and judging is strictly prohibited.
8. No breeding will be permitted at the show.
9. No advertising will be permitted until after judging is completed.



- 10. **Rabbits or Cavies that are entered and sold MUST remain until 5:00 p.m. on Sunday.**
- 11. Limit 20 entries per family.
- 12. Exhibitor passes will be handed out for all entries received by 9:00 p.m. THURSDAY.
- 13. ***The Riverton Fair and Show Committee will take all due precautions against loss, but will not be responsible for any accident, mistake, loss or damage from any cause whatsoever.***
- 14. Cage space is limited.
- 15. Exhibitors must supply 2 appropriately sized, heavy bowls per animal. Bowls will be inspected before being placed in cages. Appropriate bowls will be available for a small rental fee per bowl for the Fair.
- 16. Pet stock is limited to youth 18 years old and younger and to four animals total.
- 17. All animals must be at least three months old or older.
- 18. All animals must be removed from cages at 5:00 p.m. Sunday.
- 19. Any and all animals that bite will be removed from the Fair.
- 20. The 98th ARBA National Convention will be October 22 - 27, 2021 in Louisville, KY. For information, reference www.arb.net

RABBIT, CAVY AND PET STOCK PREMIUMS

	<u>First</u>	<u>Second</u>	<u>Third</u>
Senior Buck	\$6.00	\$5.00	\$4.00
Senior Doe	\$6.00	\$5.00	\$4.00
Buck, 6-8 mos.	\$6.00	\$5.00	\$4.00
Doe, 6-8 mos.	\$6.00	\$5.00	\$4.00
Junior Buck	\$6.00	\$5.00	\$4.00
Junior Doe	\$6.00	\$5.00	\$4.00

The same awards will be made for Rabbits, for Cavies, and for Pet Stock.

A trophy will be awarded in each of the following categories:

Rabbits:	Best in Show	Cavies:	Best in Show
	Best Reserve		Best Reserve
	Best of Pet Stock		Best of Pet Stock
	Reserve Pet		Reserve Pet

Rosettes will be awarded for Rabbits Best of Breed and Best of Opposite Sex

Trophies will be awarded for Best Hamster in Show and Reserve Hamster.

RABBIT COSTUME CONTEST

Dress up your rabbit. Be creative!

Open to all Rabbit Dept. exhibitors.

Judging Sunday 1:00 PM

Adult & Junior Divisions / 1st place - \$6 • 2nd - \$5 • 3rd - \$4 • 4th - \$3

RABBIT SHOW ENTRY FORM

MAIL ENTRY FORM & CHECK DIRECTLY TO:

Kate Fitzgerald, 34 Millard St., Torrington, CT 06790

NO PHONE ENTRIES WILL BE ACCEPTED

Name: _____

Address: _____

City: _____ State: _____ Zip: _____

Phone: _____ Email: _____

Junior Exhibitor (under 12) show age: _____. All Juniors pay 50 cents per animal. Adult Exhibitors enclose **\$7.00** entry fee for maximum of three animals; 50 cents each per additional animal. List each entry individually. **DO NOT SEND CASH. Make all checks payable to The Riverton Fair.**

Open Show: Age 18 and older _____ Youth Show: Below age 18 _____

Ear #	Breed	Variety	Age	Sex	Fee

Total Fee \$ _____

Division F - VEGETABLES

RULES



1. Only one entry can be made of the same variety by any exhibitor, singly or in a collection or display.
2. The specimens for exhibit must be correctly labeled.
3. ***Exhibits must remain in place until 5:00 p.m. on Sunday.***
4. All exhibits of vegetables must be composed of exactly the number of specimens or quantity named in the schedule, and the names of all varieties must be placed on the exhibit, whether single plate or in a collection.
5. Substitution or incorrect naming will disqualify the entry. In collections and displays, cards bearing the name of the variety must be placed on each plate.
6. All collections must be made up from specimens other than those entered in these single varieties and plates.
7. All vegetables must be in prime market condition.
8. The judges reserve the right to award no prize or a second in classes where the entries do not justify a higher award.

Dept. 1 Beans - 10 pods per plate

	<u>First</u>	<u>Second</u>
1 Green Flat Pod	\$2.00	\$1.00
2 Green Round Pod	2.00	1.00
3 Lima - Bush or Pole	2.00	1.00
4 Pole	2.00	1.00
5 Yellow Flat Pod	2.00	1.00
6 Yellow Round Pod	2.00	1.00
7 Shell	2.00	1.00
8 Other - Fresh	2.00	1.00

Dept. 2 Beets - 3 specimens

1 Red Round	2.00	1.00
2 Yellow Round	2.00	1.00
3 Other	2.00	1.00

Dept. 3 Broccoli

One Head	2.00	1.00
----------	------	------

Dept. 4 Brussels Sprouts

One Head	2.00	1.00
----------	------	------

Dept. 5 Cabbage

1 Dutch Flat	2.00	1.00
2 Green Round	2.00	1.00
3 Red	2.00	1.00
4 Savoy	2.00	1.00
5 Chinese	2.00	1.00
6 Other	2.00	1.00

Dept. 6 Carrots - 3 specimens

1 Long - over 6"	2.00	1.00
2 Short - under 6"	2.00	1.00
3 Other	2.00	1.00

	Dept. 7 Cauliflower		
One Head		2.00	1.00
	Dept. 8 Celery - One plant		
1 Blanching Type		2.00	1.00
2 Green Type		2.00	1.00
	Dept. 9 Corn - Sweet		
	3 Ears - edible, with one-half husk removed		
1 Bi-color (yellow and white)		2.00	1.00
2 White		2.00	1.00
3 Yellow		2.00	1.00
	Dept. 10 Cucumbers		
1 Pickling - 2 inches or under - plate of 5		2.00	1.00
2 Pickling - 6 inches or under - plate of 5		2.00	1.00
3 Ripe - Yellow - plate of 3		2.00	1.00
4 Slicing - plate of 3		2.00	1.00
5 Seedless - plate of 3		2.00	1.00
6 Other - plate of 3		2.00	1.00
	Dept. 11 Eggplant - One Specimen		
1 Purple Italian		2.00	1.00
2 Other Italian		2.00	1.00
3 Purple Oriental		2.00	1.00
4 Other Oriental		2.00	1.00
5 Other		2.00	1.00
	Dept. 12 Endive		
One Head		2.00	1.00
	Dept. 13 Herbs		
Collection of Five Varieties		2.00	1.00
	Dept. 14 Kale		
One Plant		2.00	1.00
	Dept. 15 Kohlrabi		
Three Specimens		2.00	1.00
	Dept. 16 Melons		
1 Canteloupe		2.00	1.00
2 Honeydew		2.00	1.00
3 Crenshaw		2.00	1.00
4 Other		2.00	1.00
	Dept. 17 Onions - Three Bulbs		
1 Red Flat		2.00	1.00
2 Red Round		2.00	1.00
3 White Flat		2.00	1.00
4 White Round		2.00	1.00
5 Yellow Flat		2.00	1.00
6 Yellow Round		2.00	1.00
7 Garlic		2.00	1.00
8 Shallots		2.00	1.00
9 Leeks		2.00	1.00
	Dept. 18 Parsnips		
Three Specimens		2.00	1.00

Dept. 19 Peppers - Three Specimens

1 Green Bell Type	2.00	1.00
2 Red Bell Type	2.00	1.00
3 Yellow Bell Type	2.00	1.00
4 Other Bell Type	2.00	1.00
5 Red Frying	2.00	1.00
6 Green Frying	2.00	1.00
7 Cherry	2.00	1.00
8 Jalapenos	2.00	1.00
9 Cayenne	2.00	1.00
10 Other Green Hot	2.00	1.00
11 Other Red Hot	2.00	1.00
12 Other	2.00	1.00

Dept. 20 Potatoes - Plate of Three

1 Chippewa	2.00	1.00
2 Yukon Gold	2.00	1.00
3 Green Mountain	2.00	1.00
4 Katahdin	2.00	1.00
5 Kennebec	2.00	1.00
6 Red Type	2.00	1.00
7 Sweet	2.00	1.00
8 Purple Flesh	2.00	1.00
9 Fingerling	2.00	1.00
10 Other	2.00	1.00

Dept. 21 Potatoes - Peck of Each

1 Chippewa	2.00	1.00
2 Yukon Gold	2.00	1.00
3 Green Mountain	2.00	1.00
4 Katahdin	2.00	1.00
5 Kennebec	2.00	1.00
6 Red Type	2.00	1.00
7 Sweet	2.00	1.00
8 Purple Flesh	2.00	1.00
9 Fingerling	2.00	1.00
10 Other	2.00	1.00

Dept. 22 Pumpkins - One Specimen

1 Connecticut Field	2.00	1.00
2 New England Pie	2.00	1.00
3 Miniature	2.00	1.00
4 White	2.00	1.00
5 Green	2.00	1.00
6 Striped	2.00	1.00
7 Flat	2.00	1.00
8 Watted	2.00	1.00
9 Other	2.00	1.00

Dept. 23 Radishes - Plate of Five

1 Red	2.00	1.00
2 White	2.00	1.00
3 Other Colored	2.00	1.00
4 Long	2.00	1.00
5 Other	2.00	1.00

Dept. 24 Spinach

1 New Zealand - One Plant	2.00	1.00
2 Savoy - One-half Peck	2.00	1.00

Dept. 25 Summer Squash - One Speciment

1 Green Zucchini	2.00	1.00
2 Yellow Zucchini	2.00	1.00
3 Striped Zucchini	2.00	1.00
4 Round Zucchini	2.00	1.00
5 Italian	2.00	1.00
6 Patty Pan	2.00	1.00
7 Yellow Straight Neck	2.00	1.00
8 Yellow Crook Neck	2.00	1.00
9 Other	2.00	1.00

Dept. 26 Winter Squash - One Specimen

1 Acorn	2.00	1.00
2 Butternut	2.00	1.00
3 Buttercup	2.00	1.00
4 Hubbard - Blue	2.00	1.00
5 Hubbard - Green	2.00	1.00
6 Hubbard - Other	2.00	1.00
7 Spaghetti	2.00	1.00
8 Delicata	2.00	1.00
9 Kabocha	2.00	1.00
10 Other	2.00	1.00

Dept. 27 Tomatoes - Plate of Three - Stems on

1 Plum - Red	2.00	1.00
2 Preserving - Green	2.00	1.00
3 Cherry - Red	2.00	1.00
4 Cherry - Other	2.00	1.00
5 Grape	2.00	1.00
6 Small Red	2.00	1.00
7 Large Red	2.00	1.00
8 Large Yellow	2.00	1.00
9 Heirloom	2.00	1.00
10 Other	2.00	1.00

Dept. 28 Turnips - Plate of Three

1 Fall Turnips	2.00	1.00
2 Winter Turnips	2.00	1.00

Dept. 29 Watermelons - One Specimen

1 Long	2.00	1.00
2 Round	2.00	1.00

Dept. 30 Farm Display

Display of fruits, vegetables and farm crops - not to exceed 6 feet frontage.

See Committee for placement before setting up.

Judging:	Quality - 35%	Arrangement - 35%	Variety - 30%
First Prize - \$30.00	Second Prize - \$25.00	Third Prize - \$20.00	

Dept. 31 Largest Specimen

1 Beet - Table Type	2.00	1.00
2 Carrot	2.00	1.00
3 Cucumber	2.00	1.00
4 Potato	2.00	1.00
5 Pumpkin - Hard Stem (CT Field Type)	2.00	1.00
6 Pumpkin - Soft Stem	2.00	1.00
7 Zucchini	2.00	1.00
8 Butternut	2.00	1.00
9 Hubbard	2.00	1.00
10 Tomato	2.00	1.00
11 Other	2.00	1.00

Division G - FIELD CROPS/SEED CROPS

Must be this year's crop.

	Dept. 1 Dent Corn - Three Ears		
1 Red		2.00	1.00
2 White		2.00	1.00
3 Yellow		2.00	1.00
	Dept. 2 Flint Corn - Three Ears		
1 Indian		2.00	1.00
2 Red		2.00	1.00
3 White		2.00	1.00
4 Yellow		2.00	1.00
	Dept. 3 Pop Corn - Three Ears		
Any Color		2.00	1.00
	Dept. 4 Collection of Seeds		
Cover Crops and Cereal Crops		3.00	2.00
	Dept. 5 Nuts - One Quart		
1 Black Walnuts		2.00	1.00
2 Butternuts		2.00	1.00
3 Chestnuts		2.00	1.00
4 English Walnuts		2.00	1.00
5 Shagbark Hickory Walnuts		2.00	1.00
6 Almonds		2.00	1.00
7 Hazelnuts		2.00	1.00
	Dept. 6 Sunflower		
One Head Only		2.00	1.00
	Dept. 7 Eggs - One Dozen		
1 Brown - 21-24 oz.		2.00	1.00
2 White - 21-24 oz.		2.00	1.00
3 Colored - 21-24 oz.		2.00	1.00
4 Bantam		2.00	1.00
5 Other		2.00	1.00



Division H - FRUITS

Dept.	Description	Variety	First	Second
1	Apples, 16 qt basket	1 - Baldwin	\$5.00	\$4.00
		2 - Cortland	5.00	4.00
		3 - Empire	5.00	4.00
		4 - Gala	5.00	4.00
		5 - Golden Delicious	5.00	4.00
		6 - Greening	5.00	4.00
		7 - Ida Red	5.00	4.00
		8 - Jonathan	5.00	4.00
		9 - Liberty	5.00	4.00
		10 - Macoun	5.00	4.00
		11 - Macintosh	5.00	4.00
		12 - Northern Spy	5.00	4.00
		13 - Red Delicious	5.00	4.00
		14 - Staymen Winesap	5.00	4.00
		15 - Mutsu	5.00	4.00
		16 - Rome	5.00	4.00
2	Apples, 16 qt basket	Other variety	5.00	4.00
3	Apples, Plate of Five	1 - Baldwin	2.00	1.50
		2 - Cortland	2.00	1.50
		3 - Empire	2.00	1.50
		4 - Gala	2.00	1.50
		5 - Golden Delicious	2.00	1.50
		6 - Greening	2.00	1.50
		7 - Ida Red	2.00	1.50
		8 - Jonathan	2.00	1.50
		9 - Liberty	2.00	1.50
		10 - Macoun	2.00	1.50
		11 - Macintosh	2.00	1.50
		12 - Northern Spy	2.00	1.50
		13 - Red Delicious	2.00	1.50
		14 - Staymen Winesap	2.00	1.50
		15 - Mutsu	2.00	1.50
		16 - Rome	2.00	1.50
4	Apples, Plate of Five	Other variety	2.00	1.50
5	<i>Sweepstakes Basket of Apples</i>		5.00	
6	Pears, Plate of Five	1 - Anjou	2.00	1.50
		2 - Bartlett	2.00	1.50
		3 - Bosc	2.00	1.50
		4 - Seckel	2.00	1.50
		5 - Sheldon	2.00	1.50
		6 - Hosui	2.00	1.50
		7 - Olympic	2.00	1.50
		8 - Other	2.00	1.50
7	Pears, Collection of Five Plates - Five varieties		5.00	4.00
8	Other Fruit	1 - Grapes - 2 bunches of any one variety	2.00	1.50
		2 - Peaches - plate of five - any variety	2.00	1.50
		3 - Plums - plate of five	2.00	1.50
		4 - Quinces - plate of five	2.00	1.50
		5 - Blueberries - pint basket	2.00	1.50
		6 - Apriums/Pluots - plate of five	2.00	1.50
9	Collection of Grapes - five varieties		3.00	2.00

Division I - BREAD and PASTRY

Sandy Thomsen, Chair 860-379-8671
Committee: Margaret Gabelmann, Caitlyn Gabelmann

ALL ENTRIES MUST REMAIN IN PLACE UNTIL 5:00 PM SUNDAY.

Only items listed may be entered. No professionals may compete.

Entries must be covered with plastic wrap or in a plastic bag.

All entries for Breads, Quick Breads, Rolls, Cookies & Candies will be for judging Saturday, October 9.

	<u>First</u>	<u>Second</u>
Dept. 1 Quick Breads		
1 Baking Powder Bisquits	\$3.00	\$2.00
2 Coffee Rolls	3.00	2.00
3 Nut	3.00	2.00
4 Raisin	3.00	2.00
5 Steamed Brown	3.00	2.00
6 Yeast Rolls	3.00	2.00
7 Any Other Rolls	3.00	2.00
8 Muffins	3.00	2.00
9 Other Quick Bread	3.00	2.00
Dept. 2 Yeast Breads		
1 Oatmeal	3.00	2.00
2 Raisin	3.00	2.00
3 Rye	3.00	2.00
4 White	3.00	2.00
5 Whole Wheat	3.00	2.00
6 Other Raised Bread	3.00	2.00
Dept. 3 Candies - One Pound		
1 Chocolate Fudge	3.00	2.00
2 Chocolate Nut Fudge	3.00	2.00
3 Fondant	3.00	2.00
4 Mixed	3.00	2.00
5 Penuche	3.00	2.00
6 Any Other Variety	3.00	2.00
Dept. 4 Cookies - Plate of Six		
1 Bar	3.00	2.00
2 Filled	3.00	2.00
3 Ginger	3.00	2.00
4 Molasses	3.00	2.00
5 Oatmeal	3.00	2.00
6 Peanut Butter	3.00	2.00
7 Sugar	3.00	2.00
8 Tollhouse	3.00	2.00

Cakes and Pies

All entries for cakes & pies will be for judging Sunday, October 10.

Sandy Thomsen, Chair 860-379-8671
Committee: Margaret Gabelmann, Caitlyn Gabelmann

ALL ENTRIES MUST REMAIN IN PLACE UNTIL 5:00 PM SUNDAY.

	<u>First</u>	<u>Second</u>
Dept. 5 Cakes		
1 Angel (unfrosted)	\$3.00	\$2.00
2 Applesauce Cake	3.00	2.00
3 Cheesecake	3.00	2.00
4 Chiffon	3.00	2.00
5 Chocolate Layer, White or Yellow Cake with Chocolate Frosting & Filling	3.00	2.00
6 Coconut Layer	3.00	2.00
7 Coffee Ring, Yeast	3.00	2.00
8 Dark Fruit	3.00	2.00
9 Date & Nut	3.00	2.00
10 Pound Cake	3.00	2.00
11 Quick Loaf	3.00	2.00
12 Raised Loaf	3.00	2.00
13 Solid Chocolate Batter & Frosting	3.00	2.00
14 Sponge	3.00	2.00
15 Cake made with Sour Cream or Sour Milk	3.00	2.00
16 School Lunch (judged on attractiveness and nutrition)	3.00	2.00
17 Crullers, 1/2 dozen, yeast	3.00	2.00
18 Doughnuts	3.00	2.00
19 Fancy Decorated Cake - non-professional	3.00	2.00
20 State Baking Contest		
PLIMOTH THIRDED BREAD	3.00	2.00
See Rules in the beginning of this book		
Dept. 6 Pies		
1 Apple	3.00	2.00
2 Blueberry	3.00	2.00
3 Cherry	3.00	2.00
4 Coconut Custard	3.00	2.00
5 Lemon Meringue	3.00	2.00
6 Mince	3.00	2.00
7 Squash or Pumpkin	3.00	2.00
8 Any Other Custard Pie	3.00	2.00
9 Any Other Fruit Pie	3.00	2.00
10 State Apple Pie Contest - Two-Crusted Apple Pie	3.00	2.00
See Rules in the beginning of this book		

Dept. 7 Riverton Fair President's Choice for 2021

APPLE STRUEDEL

Entry should be one aluminum disposable pan of Apple Struedel covered with plastic wrap. Recipe Card must be attached.

Judging will be done by Fair President, Matt Cook on Sunday morning.

Entries must be in place by 9 AM on Sunday morning.

Judging criteria as follows: Flavor 50%, Appearance 25%, Texture 25%.

First Prize: \$3.00 Second Prize: \$2.00

Division J - CANNED GOODS

Three jars per item must be submitted except for collections, as part of judging is based on consistency of quality.

ALL ENTRIES MUST REMAIN IN PLACE UNTIL 5:00 PM SUNDAY.



Quart or Pint Jars ONLY unless specified.

Each variety in a collection must be identified.



	<u>First</u>	<u>Second</u>
Dept. 1 Canned Fruit		
1 Applesauce	\$2.00	\$1.00
2 Apples	2.00	1.00
3 Blackberries	2.00	1.00
4 Blueberries	2.00	1.00
5 Cherries	2.00	1.00
6 Peaches	2.00	1.00
7 Pears	2.00	1.00
8 Plums	2.00	1.00
9 Raspberries, Black	2.00	1.00
10 Raspberries, Red	2.00	1.00
11 Strawberries	2.00	1.00
Dept. 2 Collection, Three jars Berries	3.00	2.00
Dept. 3 Collection, Five jars, Five varieties Fruit	3.00	2.00
Dept. 4 Canned Vegetable		
1 Asparagus	\$2.00	\$1.00
2 Beets	2.00	1.00
3 Carrots	2.00	1.00
4 Corn, white	2.00	1.00
5 Corn, yellow	2.00	1.00
6 Dandelion Greens	2.00	1.00
7 Lima Beans	2.00	1.00
8 Mincemeat	2.00	1.00
9 Peas	2.00	1.00
10 Spinach	2.00	1.00
11 Shelled Beans	2.00	1.00
12 Squash	2.00	1.00
13 String Beans	2.00	1.00
14 Succotash	2.00	1.00
15 Swiss Chard	2.00	1.00
16 Tomatoes	2.00	1.00
17 Tomato Puree	2.00	1.00
18 Vegetable Soup	2.00	1.00
19 Salsa	2.00	1.00
20 Chili (will be taste-tested)	2.00	1.00
21 Pasta Sauce	2.00	1.00
22 Sauerkraut	2.00	1.00
Dept. 5 Collection, Five jars, Five varieties Vegetables	3.00	2.00

Dept. 6 Pickles
Half Pints Allowed

1 Beet	\$2.00	\$1.00
2 Bread & Butter	2.00	1.00
3 Cabbage	2.00	1.00
4 Catsup	2.00	1.00
5 Cauliflower	2.00	1.00
6 Chili Sauce	2.00	1.00
7 Chow Chow	2.00	1.00
8 Corn Relish	2.00	1.00
9 Cucumber, sour	2.00	1.00
10 Cucumber, sweet	2.00	1.00
11 Dill, sour	2.00	1.00
12 Dill, sweet	2.00	1.00
13 Ice Box Bread & Butter	2.00	1.00
14 Mixed Sweet	2.00	1.00
15 Mustard Pickles	2.00	1.00
16 Onions	2.00	1.00
17 Peach	2.00	1.00
18 Pear	2.00	1.00
19 Pepper Hash	2.00	1.00
20 Relish	2.00	1.00
21 String Bean	2.00	1.00
22 Tomato, sour	2.00	1.00
23 Tomato, sweet	2.00	1.00
24 Zucchini pickles	2.00	1.00
25 Zucchini relish	2.00	1.00
26 Other	2.00	1.00
Dept. 7 Collection, Five jars, Five varieties Pickles	3.00	2.00

Dept. 8 Jellies

Must use standard 602 six or eight ounce jars for jellies and jams.
No paraffin or wax allowed.

1 Apple	2.00	\$1.00
2 Apricot	2.00	1.00
3 Black Raspberry	2.00	1.00
4 Blueberry	2.00	1.00
5 Crabapple	2.00	1.00
6 Currant	2.00	1.00
7 Elderberry	2.00	1.00
8 Grape	2.00	1.00
9 Mint	2.00	1.00
10 Peach	2.00	1.00
11 Plum	2.00	1.00
12 Quince	2.00	1.00
13 Red Raspberry	2.00	1.00
14 Strawberry	2.00	1.00
15 Other Jelly	2.00	1.00
Dept. 9 Collection, Five jars, Five varieties Jelly	3.00	2.00

Dept. 10 Jams

Must use standard 602 six or eight ounce jars for jellies and jams.

No paraffin or wax allowed.

1 Apple Butter	2.00	\$1.00
2 Apricot	2.00	1.00
3 Blueberry	2.00	1.00
4 Blackberry	2.00	1.00
5 Black Raspberry	2.00	1.00
6 Peach	2.00	1.00
7 Pear Butter	2.00	1.00
8 Plum	2.00	1.00
9 Red Raspberry	2.00	1.00
10 Strawberry	2.00	1.00
11 Other Jam	2.00	1.00

Dept. 11 Collection, Five jars, Five varieties Jam 3.00 2.00

Dept. 12 Miscellaneous

1 Comb Honey - three jars	2.00	\$1.00
2 Honey, light - three one-pound jars	2.00	1.00
3 Honey, dark - three one-pound jars	2.00	1.00
4 Maple Sugar - one pound	2.00	1.00
5 Maple Syrup - three quart jars	2.00	1.00
6 Herbed or Flavored Vinegar - three jars or decorative bottles	2.00	1.00

Dept. 13 Dehydrated

Only one jar need be presented in this category. not three.

Only entries in standard pint or quart canning jars will be judged.

1 Apples	\$2.00	\$1.00
2 Apricots	2.00	1.00
3 Bananas	2.00	1.00
4 Berries	2.00	1.00
5 Cherries	2.00	1.00
6 Cranberries	2.00	1.00
7 Citrus Fruits	2.00	1.00
8 Grapes	2.00	1.00
9 Peaches	2.00	1.00
10 Pears	2.00	1.00
11 Pineapple	2.00	1.00
12 Strawberries	2.00	1.00
13 Other Fruit	2.00	1.00
14 Trail Mix (list ingredients)	2.00	1.00
15 Green Beans	2.00	1.00
16 Carrots	2.00	1.00
17 Corn	2.00	1.00
18 Mushrooms	2.00	1.00
19 Peas	2.00	1.00
20 Onions	2.00	1.00
21 Peppers	2.00	1.00
22 Tomatoes	2.00	1.00
23 Squash	2.00	1.00
24 Herbs	2.00	1.00
25 Other Vegetable	2.00	1.00
26 Other Non-Vegetable	2.00	1.00

Division K - NEEDLEWORK

Articles must not have been exhibited at the Riverton Fair in any previous year.

All work must have been done by the exhibitor.

ALL ENTRIES MUST REMAIN IN PLACE UNTIL 5:00 PM SUNDAY.

No commercial work allowed.

Embroidery

Dept.	First	Second
1 Centerpiece	\$2.00	\$1.00
2 Towel	2.00	1.00
3 Pillow Cases	2.00	1.00
4 Scarf	2.00	1.00
5 Needlepoint Picture	2.00	1.00
6 Needlepoint Chair Seat	2.00	1.00
7 Needlepoint Misc.	2.00	1.00
8 Bargello Specimen	2.00	1.00
9 Centerpiece over 18"	2.00	1.00
10 Pillow Top	2.00	1.00
11 Baby Items	2.00	1.00
12 Christmas Items	2.00	1.00
13 Tablecloth	2.00	1.00
14 Sampler or Picture	2.00	1.00
15 Miscellaneous Embroidery	2.00	1.00

Sewing and Stitch Work

16 Counted Cross Stitch Picture	2.00	1.00
17 Counted Cross Stitch Pillow	2.00	1.00
18 Counted Cross Stitch Bookmark	2.00	1.00
19 Counted Cross Stitch Misc.	2.00	1.00
20 Cutwork Specimen	2.00	1.00
21 French Knot Specimen	2.00	1.00
22 Applique Article	2.00	1.00
23 Tote Bag	2.00	1.00
24 Kitchen Apron	2.00	1.00
25 Hot Dish Mats	2.00	1.00
26 Pillow	2.00	1.00
27 Stuffed Animal, handmade	2.00	1.00
28 Doll, Handmade	2.00	1.00
29 Doll, Dressed	2.00	1.00
30 Little Girl's Dress	2.00	1.00
31 Christmas Stocking	2.00	1.00
32 Christmas Skirt	2.00	1.00
33 Christmas Ornament	2.00	1.00
34 Miscellaneous Sewn or Stitched Item	2.00	1.00

Infant Items

35 Croched Booties	2.00	1.00
36 Crib Blanket, Crocheted or Knitted	2.00	1.00
37 Crocheted Sweater, Cap & Booties	2.00	1.00
38 Knitted Sweater, Cap & Booties	2.00	1.00
39 Knitted Booties	2.00	1.00
40 Knitted Baby Sweater	2.00	1.00
41 Carriage Cover	2.00	1.00
42 Miscellaneous Infant Item	2.00	1.00

Tatting

43	Pillow Cases	2.00	1.00
44	Trimming	2.00	1.00
45	Centerpiece	2.00	1.00

Knitting

46	Woman's Hat	2.00	1.00
47	Man's Hat	2.00	1.00
48	Woman's Sweater	2.00	1.00
49	Man's Sweater	2.00	1.00
50	Child's Sweater	2.00	1.00
51	Afghan	2.00	1.00
52	Socks	2.00	1.00
53	Mittens	2.00	1.00
54	Gloves	2.00	1.00
55	Slippers	2.00	1.00
56	Scarf	2.00	1.00
57	Poncho	2.00	1.00
58	Vest	2.00	1.00
59	Cotton Knitted Bedspread	2.00	1.00
60	Miscellaneous Knitted Item	2.00	1.00

Crocheting

61	Afghan	2.00	1.00
62	Slippers	2.00	1.00
63	Sweater	2.00	1.00
64	Pillow	2.00	1.00
65	Woman's Hat	2.00	1.00
66	Man's Hat	2.00	1.00
67	Vest	2.00	1.00
68	Bedspread	2.00	1.00
69	Trimmed Towel	2.00	1.00
70	Lace, one yard	2.00	1.00
71	Centerpiece, 18 inches or over	2.00	1.00
72	Doily, under 18 inches	2.00	1.00
73	Tablecloth	2.00	1.00
74	Handbag	2.00	1.00
75	Pot Holders	2.00	1.00
76	Poncho	2.00	1.00
77	Filet Crochet Specimen	2.00	1.00
78	Miscellaneous Crocheted Item	2.00	1.00

Rugs

79	Braided Rag	2.00	1.00
80	Woven Rag	2.00	1.00
81	Hooked (under 6')	2.00	1.00
82	Crocheted	2.00	1.00
83	Hooked Chair Set	2.00	1.00
84	Hooked Wall Hanging	2.00	1.00
85	Latched	2.00	1.00
86	Other	2.00	1.00

Quilting

Exhibitors may only enter one quilt per category.

87	Cotton Hand Quilted	2.00	1.00
88	Cotton Hand Pierced	2.00	1.00
89	Machine Quilt	2.00	1.00
90	Applique Quilt	2.00	1.00
91	Quilt, 1000 pieces or more	2.00	1.00
92	Pieced Comforter, tacked	2.00	1.00
93	Crib Quilt	2.00	1.00
94	Wall Hanging	2.00	1.00
95	Quilted Jacket	2.00	1.00
96	Quilted Garment	2.00	1.00
97	Antique Quilt	2.00	1.00

State Quilt Contest

Quilts are entered simultaneously in the State Quilt Contest and the local contest.

Rules in the beginning of this book

Hand Applique	5.00	3.00
Patchwork: Machine Quilting	5.00	3.00
Patchwork: Hand Quilting	5.00	3.00

Miscellaneous

98	Button Design	2.00	1.00
99	Shell Work	2.00	1.00
100	Novelty Made of Unusual Materials	2.00	1.00
101	Liquid Embroidery Specimen	2.00	1.00
102	Batik Specimen	2.00	1.00
103	Beaded Work	2.00	1.00
104	Felt Work	2.00	1.00
105	Macrame	2.00	1.00
106	Other Latched Work	2.00	1.00
107	Shirred Item	2.00	1.00
108	Tablerunner	2.00	1.00
109	Other	2.00	1.00

Sweepstakes Prizes

Award - Rosette and \$5.00 additional premium

Best Rug Best Quilt Best Crocheted Piece
Best Knitted Piece Best Embroidered Piece



2021 Riverton Fair BANNER CONTEST

The winning banners will be proudly displayed and admired by thousands of people each year at the fair!

They portray the heart and spirit of the fair!



CONTEST RULES

- The banner should be handcrafted of any suitable durable material.
- Size should be at least 2 feet by 3 feet but not more than 5 feet by 3 feet.
- The banner should portray the feel and tradition of the Riverton Fair.
- "Riverton Fair" should be included somewhere on the banner but does not need to dominate.
- The banner should also include the current year somewhere as well, as *the winning banners will become the property of the Union Agricultural Society (Riverton Fair) and will be proudly displayed each year during the fair.*

JUDGING	Attractiveness	35%
	Workmanship	25%
	Originality	25%
	Suitability of materials	<u>15%</u>
		100%

PRIZES

Prizes will be awarded in two divisions:

Youth (up through age 15) and Adult (age 16 and up)

First Place in each division: \$10.00

Second Place in each division: \$ 5.00

For further information please contact Gloria Gabelmann at
860-379-5254

Division L - FLORAL

Floral will be judged with regard to artistic arrangement, color effect and their containers, as well as other qualities of the exhibit. Containers can be anything the exhibitor desires, but they should conform to the type of the exhibit, giving added appeal. No professional exhibits allowed. All exhibits must be grown by exhibitor. Materials listed on conservation list not to be used.

ALL ENTRIES MUST REMAIN IN PLACE UNTIL 5:00 PM SUNDAY.



		<u>First</u>	<u>Second</u>
Dept. 1	Specimen Dahlia, any variety	\$2.00	\$1.00
Dept. 2	Collection Dahlias, at least 5 varieties	2.00	1.00
Dept. 3	Collection Gladioli	2.00	1.00
Dept. 4	Vase of Annual Flowers	2.00	1.00
01	Ageratum, 6 stems	2.00	1.00
02	Asters, 6 stems	2.00	1.00
03	Bachelor Buttons, 6 stems	2.00	1.00
04	Calendula, 6 stems	2.00	1.00
05	Cosmos, 6 flowers	2.00	1.00
06	Gaillardia, 6 flowers	2.00	1.00
07	Larkspur, 6 stems	2.00	1.00
08	Marigold, Large, 6 stems	2.00	1.00
09	Marigold, French, 6 stems	2.00	1.00
10	Pansies, 6 flowers	2.00	1.00
11	Petunias, 6 flowers	2.00	1.00
12	Phlox, 6 stems	2.00	1.00
13	Salpiglossis, 6 stems	2.00	1.00
14	Scabiosa, 6 flowers	2.00	1.00
15	Snapdragons, 6 stems	2.00	1.00
16	Stock, 6 stems	2.00	1.00
17	Strawflowers, 6 flowers	2.00	1.00
18	Verbena, 6 stems	2.00	1.00
19	Zinnias, Candy Striped, 6 flowers	2.00	1.00
20	Zinnias, Large, 6 flowers	2.00	1.00
21	Zinnias, Persian Carpet, 6 flowers	2.00	1.00
22	Zinnias, PomPom, 6 flowers	2.00	1.00
23	Any Other Annual Flower	2.00	1.00

Dept. 5	Vase of Perennial Flowers	2.00	1.00
01	Aconite, 6 stems	2.00	1.00
02	Chrysanthemums, Large, 6 stems	2.00	1.00
03	Chrysanthemums, Small, 6 stems	2.00	1.00
04	Collection of Roses	2.00	1.00
05	Delphiniums, 6 stems	2.00	1.00
06	Hardy Asters, 6 stems	2.00	1.00
07	Helenium, 6 stems	2.00	1.00
08	Phlox, 6 stems	2.00	1.00
09	Single Rose	2.00	1.00
10	Violas, 6 flowers	2.00	1.00
11	Any Other Perennial Flowers	2.00	1.00

Dept. 6	Arrangement Gourd Collection	3.00	2.00
Dept. 7	Floral Arrangement in Old Crockery	2.00	1.00
Dept. 8	Miniature Bouquet - <i>Not to exceed 4" overall</i>	2.00	1.00
Dept. 9	Wildflower Bouquet	2.00	1.00
Dept. 10	Collection Fall Foliage, Flowers, Berries, etc.	2.00	1.00
Dept. 11	Corsage.	2.00	1.00
Dept. 12	Christmas Ornaments	2.00	1.00
Dept. 13	Dry Flower or Seed Exhibit	2.00	1.00
Dept. 14	Miniature Garden, not over 8 square feet	5.00	3.00
Dept. 15	Seed Pod and Cone Wreath	2.00	1.00
Dept. 16	Silk Flowers	2.00	1.00

Dept. 17	Jack O'Lantern Contest	<u>1st</u>	<u>2nd</u>	<u>3rd</u>
01	Cut Out Pumpkin	4.00	3.00	2.00
02	Decorated Pumpkin	4.00	3.00	2.00

Potted House Plants

Dept. 18	African Violet	2.00	1.00
Dept. 19	Begonia	2.00	1.00
Dept. 20	Cactus	2.00	1.00
Dept. 21	Fern	2.00	1.00
Dept. 22	Foliage Plant	2.00	1.00
Dept. 23	Geranium	2.00	1.00
Dept. 24	Collection of Potted Plants - 5 varieties or more	5.00	3.00
Dept. 25	A Garden on Wheels Must not exceed 18' x 18" x 18" in size	3.00	2.00
Dept. 26	A Fairy Door Must be able to sit on a 6" deep shelf and not be more than 9" high overall	3.00	2.00
Dept. 30	Repurposed Jars Must be no larger than 6" in diameter and 9" in height May be one jar of a set but no more than 4 jars total	3.00	2.00

Sweepstakes Award -- Rosette + \$3.00

Division M - ARTS & CRAFTS/ PAINTING & PHOTOGRAPHY

Walt and Laurel Saramak, Co-Chairs 860-379-5880; Charlie Bierce

ARTS & CRAFTS

	First	Second	Third
Dept. 1 Basketry	\$3.00	\$2.00	\$1.00
Dept. 2 Cabinet Work	3.00	2.00	1.00
Dept. 3 Carved Wood Work	3.00	2.00	1.00
Dept. 4 Ceramics	3.00	2.00	1.00
Dept. 5 Handcrafted Ceramics	3.00	2.00	1.00
Dept. 6 Driftwood Specimen	3.00	2.00	1.00
Dept. 7 Handmade Jewelry	3.00	2.00	1.00
Dept. 8 Lampshades	3.00	2.00	1.00
Dept. 9 Leather Work	3.00	2.00	1.00
Dept. 10 Plastercraft	3.00	2.00	1.00
Dept. 11 Specimen Sculpture	3.00	2.00	1.00
Dept. 12 Specimen Stenciling	3.00	2.00	1.00
Dept. 13 Seasonal Decorations: large & original NEW CATEGORY!	3.00	2.00	1.00
Dept. 14 Seasonal Decorations: small & original NEW CATEGORY!	3.00	2.00	1.00
Dept. 15 Lathe Turned Wood Work	3.00	2.00	1.00
Dept. 16 Metal Work (Silver, Brass, Copper, etc.)	3.00	2.00	1.00
Dept. 17 Wind Chimes NEW CATEGORY!	3.00	2.00	1.00
Dept. 18 Stained Glass	3.00	2.00	1.00
Dept. 19 Other	3.00	2.00	1.00

ADULT PAINTING EXHIBIT RULES

Ages 16 years and older -- Open to all Amateurs

1. Paintings may be presented between 3:00 and 8:00 PM on Thursday, and on Friday between 9:00 AM and 4:00 PM. **They must be in by 4:00 PM on Friday.**
2. **Paintings must remain on exhibit until 5:00 PM Sunday.**
3. No more than five entries in this class will be accepted from a single exhibitor. No more than two entries in any subcategory will be accepted from a single exhibitor. **All paintings must be framed.**
4. Any work not suitable for mounting must be prepared for hanging the exhibit. The committee may not hang work if it is not suitably prepared. Any painting larger than 24"x36" (outside dimensions including frame) will be disqualified.

Dept. 18 Acrylic Painting

01 Animal	\$5.00	\$3.00	\$2.00
02 Landscape	5.00	3.00	2.00
03 Seascape	5.00	3.00	2.00
04 Portrait	5.00	3.00	2.00
05 Still Life	5.00	3.00	2.00
06 Abstract	5.00	3.00	2.00

Dept. 19 Oil Painting

01 Animal	5.00	3.00	2.00
02 Landscape	5.00	3.00	2.00
03 Seascape	5.00	3.00	2.00
04 Portrait	5.00	3.00	2.00
05 Still Life	5.00	3.00	2.00
06 Abstract	5.00	3.00	2.00

Dept. 20 Pastels Under Glass

01 Animal	5.00	3.00	2.00
02 Landscape	5.00	3.00	2.00
03 Seascape	5.00	3.00	2.00
04 Portrait	5.00	3.00	2.00
05 Still Life	5.00	3.00	2.00
06 Abstract	5.00	3.00	2.00

Dept. 21 Pen & Ink Sketch

	3.00	2.00	1.50
--	------	------	------

Dept. 22 Pencil Sketch

	3.00	2.00	1.50
--	------	------	------

Dept. 23 Charcoal Drawing

	3.00	2.00	1.50
--	------	------	------

Dept. 24 Watercolors

01 Animal	5.00	3.00	2.00
02 Landscape	5.00	3.00	2.00
03 Seascape	5.00	3.00	2.00
04 Portrait	5.00	3.00	2.00
05 Still Life	5.00	3.00	2.00
06 Abstract	5.00	3.00	2.00

Dept. 25 Mixed Media

	5.00	3.00	2.00
--	------	------	------

ADULT PHOTOGRAPHY EXHIBIT RULES

1. Photographs may be presented between 3:00 and 8:00 PM on Thursday, and on Friday between 9:00 AM and 4:00 PM. **They must be in by 4:00 PM on Friday.**
2. **Photographs must remain on exhibit until 5:00 PM Sunday.**
3. Color prints will be accepted in the categories indicated. Black and white is a separate category with no subcategories. The committee has the right to reclassify any entry it so chooses. The committee's decision is final. Slides and snapshots may not be entered.
4. **All prints must be at least 8"x10" matted to 16"x20". No exceptions.** The total thickness of mount, print and mat must not be more than 3/8". Entries not conforming to these dimensions will not be accepted due to display limitations.
5. Hooks, strings, tape or other mounting devices may be removed by committee if they interfere with the proper display of the photograph.
6. Exhibitor's name should not appear on the front of the print or mount. Photographs may be titled (exhibitor's option).
7. The number of prints displayed by one exhibitor may be restricted by the committee based on available space.
8. Entries will NOT be accepted if an entry from is not submitted to the Fair Secretary by the deadline specified on the entry form.
9. BEST OF SHOW: One photograph, one oil painting, one other media, and one arts & crafts will be selected by the judges to receive this award.
10. Photos taken with digital cameras or digitized photos are acceptable. If major changes were made (more than cropping, adjusting brightness, and/or removing small imperfections) your entry must be entered in the Computer Enhanced category.
11. Photos and artwork may not be resubmitted within a 5 year period. For example, a photo or piece of art entered in 2018 may not be entered again until 2023.

	First	Second	Third
<u>Dept. 26</u>			
<u>COMPUTER ENHANCED PHOTOGRAPHY</u>	5.00	3.00	2.00
<i>at least 8"x10" matted to 16"x20" - no exceptions</i>			

	First	Second	Third
<u>Dept. 27</u>			
<u>COLOR PHOTOGRAPHY</u>			
<i>matted to 16"x20" - no exceptions</i>			

01 Animal	5.00	3.00	2.00
02 Landscape	5.00	3.00	2.00
03 Portrait	5.00	3.00	2.00
04 Still Life	5.00	3.00	2.00
05 Architecture	5.00	3.00	2.00
06 Seascape	5.00	3.00	2.00
07 Candid of People	5.00	3.00	2.00
08 Action	5.00	3.00	2.00
09 Funniest	5.00	3.00	2.00

NEW CATEGORY!

<u>Dept. 28</u>			
<u>BLACK & WHITE PHOTOGRAPHY</u>	5.00	3.00	2.00
<i>at least 8"x10" matted to 16"x20" - no exceptions</i>			

<u>Dept. 29</u>			
<u>RIVERTON FAIR PHOTO COMPETITION</u>	5.00	3.00	2.00
<i>at least 8"x10" matted to 16"x20" - no exceptions</i>			

Best of Show	Photography	5.00 + Rosette
Best of Show	Youth Photography	5.00 + Rosette
Best of Show	Oil Painting	5.00 + Rosette
Best of Show	Other Media	5.00 + Rosette
Best of Show	Arts & Crafts	5.00 + Rosette

Division N - YOUTH PHOTOGRAPHY

Ages 9 - 15

Walt and Laurel Saramak, Co-Chairs 860-379-5880; Charlie Bierce

ALL ENTRIES MUST REMAIN IN PLACE UNTIL 5:00 PM SUNDAY.

YOUTH PHOTOGRAPHY EXHIBIT RULES

1. Photographs may be presented between 3:00 and 8:00 PM on Thursday, and on Friday between 9:00 AM and 4:00 PM. **They must be in by 4:00 PM on Friday.**
2. **Photographs must remain on exhibit until 5:00 PM Sunday.**
3. Color prints will be accepted in the categories indicated. Black and white is a separate category with no subcategories. Slides and snapshots may not be entered.
4. **All prints must be 5"x7" matted to 8"x10". No exceptions.** The total thickness of mount, print and mat must not be more than 3/8". Entries not conforming to these dimensions will not be accepted due to display limitations.
5. Hooks, strings, tape or other mounting devices may be removed by committee if they interfere with the proper display of the photograph.
6. Exhibitor's name should not appear on the front of the print or mount. Photographs may be titled (exhibitor's option).
7. The number of prints displayed by one exhibitor may be restricted by the committee based on available space.
8. Entries will NOT be accepted if an entry form is not submitted to the Fair Secretary by the deadline specified on the entry form.
9. BEST OF SHOW: One photograph will be selected by the judges to receive this award.
10. Photos taken with digital cameras or digitized photos are acceptable. If major changes were made (more than cropping, adjusting brightness, and/or removing small imperfections) your entry must be entered in the Computer Enhanced category.
11. Photos and artwork may not be resubmitted within a 5 year period. For example, a photo or piece of art entered in 2018 may not be entered again until 2023.

	<u>First</u>	<u>Second</u>	<u>Third</u>
Dept. 31 COLOR PHOTOGRAPHY <u>5"x7" matted to 8"x10" - no exceptions</u>			
01 Animal	5.00	3.00	2.00
02 Landscape	5.00	3.00	2.00
03 Portrait	5.00	3.00	2.00
04 Still Life	5.00	3.00	2.00
05 Architecture	5.00	3.00	2.00
06 Seascape	5.00	3.00	2.00
07 Candid of People	5.00	3.00	2.00
08 Action	5.00	3.00	2.00
09 Funniest	5.00	3.00	2.00

NEW CATEGORY!

Dept. 32 BLACK & WHITE PHOTOGRAPHY <u>5"x7" matted to 8"x10" - no exceptions</u>			
01 Animal	5.00	3.00	2.00
02 Landscape	5.00	3.00	2.00
03 Portrait	5.00	3.00	2.00
04 Still Life	5.00	3.00	2.00
05 Architecture	5.00	3.00	2.00
06 Seascape	5.00	3.00	2.00
07 Candid of People	5.00	3.00	2.00
08 Action	5.00	3.00	2.00
09 Funniest	5.00	3.00	2.00

NEW CATEGORY!

Dept. 33 COMPUTER ENHANCED PHOTOGRAPHY <u>5"x7" matted to 8"x10" - no exceptions</u>	3.00	2.00	1.00
Dept. 34 RIVERTON FAIR PHOTO COMPETITION <u>5"x7" matted to 8"x10" - no exceptions</u>	5.00	3.00	2.00

Best of Show Photography 5.00 + Rosette

Division N - JUNIORS DEPT. Ages 9 - 15

Division O - JUNIORS DEPT. Ages 8 & under

Gloria Gabelmann, Chair 860-379-5254

Committee: Norma Thomsen, Cynthia Gabelmann, Jerri Morgan,
Abigail Gabelmann, Bonnie Gabelmann, Thomas Gabelmann, Donald St. Amour

Exhibitors in Junior Departments must be 15 years or under.

Please enter age (as of Fair date) on entry form.

All exhibits must be made or raised by exhibitor. One entry per category.

**Entry may be brought in Thursday from 3 to 7 PM, 9 AM to 8 PM on Friday,
and from 8 to 10 AM on Saturday -- BUT the midway will be closed at
4 PM Friday and will not reopen for entries to be brought in by vehicle.
Any entries brought in after 4 PM Friday will have to be walked in.**

**All entries must be in place by 10 AM Saturday and
ALL ENTRIES MUST REMAIN IN PLACE UNTIL 5:00 PM SUNDAY.**

Dept. 1 Vegetables

All Jr. Division vegetable entries should follow the same rules as for the Adult Division

	<u>First</u>	<u>Second</u>	<u>Third</u>
01 Beets, 3 specimens	\$2.00	\$1.00	Ribbon
02 Cabbage, 1 specimen	2.00	1.00	Ribbon
03 Carrots, 3 specimens	2.00	1.00	Ribbon
04 Onions, 3 bulbs	2.00	1.00	Ribbon
05 Popcorn, 3 ears	2.00	1.00	Ribbon
06 Potatoes, Cobbler, 3 specimens	2.00	1.00	Ribbon
07 Potatoes, Green Cobbler, 3 specimens	2.00	1.00	Ribbon
08 Potatoes, Red Type, 3 specimens	2.00	1.00	Ribbon
09 Pumpkin, 1 specimen	2.00	1.00	Ribbon
10 Sweet Corn, dried for seed, 3 ears	2.00	1.00	Ribbon
11 Sweet Corn, edible, 3 ears	2.00	1.00	Ribbon
12 Sugar Pumpkin, 1 specimen	2.00	1.00	Ribbon
13 Tomatoes, 3 specimens, stems on	2.00	1.00	Ribbon
14 Turnips, 3 specimens	2.00	1.00	Ribbon
15 Winter Squash, 1 specimen	2.00	1.00	Ribbon
16 Other Vegetable	2.00	1.00	Ribbon
17 Collection of Vegetables, Largest & Best	4.00	2.00	Ribbon
18 Largest Sunflower	2.00	1.00	Ribbon
19 Largest Pumpkin	2.00	1.00	Ribbon
20 Collection of Seeds	4.00	2.00	Ribbon
21 Veggie Varmint - Assemble an "animal" from assorted vegetables	2.00	1.00	Ribbon
22 Green Beans, 10 pods	2.00	1.00	Ribbon
23 Other Vegetable	2.00	1.00	Ribbon

Dept. 2 Cookies - Six on a plate - *Recipes must be attached*

01 Filled	2.00	1.00	Ribbon
02 Ginger	2.00	1.00	Ribbon
03 Oatmeal	2.00	1.00	Ribbon
04 Sugar	2.00	1.00	Ribbon
05 Tollhouse	2.00	1.00	Ribbon

Dept. 3	Loaf White Bread	2.00	1.00	Ribbon
	<i>Recipe must be attached</i>			

Dept. 4	Loaf Any Other Bread	2.00	1.00	Ribbon
	<i>Recipe must be attached</i>			

Dept. 5 Cakes - No Cake Mixes Allowed - Recipes must be attached

01	Angel (unfrosted)	3.00	2.00	Ribbon
02	Applesauce	3.00	2.00	Ribbon
03	White Batter - Chocolate Frosting	3.00	2.00	Ribbon
04	Chocolate Layer	3.00	2.00	Ribbon
05	Coconut Layer	3.00	2.00	Ribbon
06	Quick Loaf	3.00	2.00	Ribbon
07	Sponge (unfrosted)	3.00	2.00	Ribbon

Dept. 6 Candies - One Pound - Recipes must be attached

01	Fudge	3.00	2.00	Ribbon
02	Mixed	3.00	2.00	Ribbon
03	Penuche	3.00	2.00	Ribbon

Dept. 7 Pies - Recipes must be attached

01	Berry, any kind	3.00	2.00	Ribbon
02	Custard, any kind	3.00	2.00	Ribbon
03	Fruit, any kind	3.00	2.00	Ribbon

Dept. 8 State Junior Baking Contest - Division N Only

MOLASSES CORNBREAD	3.00	2.00	1.00
---------------------------	------	------	------

See Recipe and Rules in the beginning of this book

Dept. 34 Riverton Fair President's Choice Contest - Division N Only

APPLE STRUEDEL	3.00	2.00	1.00
-----------------------	------	------	------

Entry to be one Apple Struedel in a disposable pie tin covered with plastic wrap.

Recipe card must be attached. Judging will be by Fair President, Matt Cook on Sunday. *Entries must be in place by 9 AM Sunday morning!*

Dept. 9 Needlework

01	Apron	2.00	1.00	Ribbon
02	Blouse	2.00	1.00	Ribbon
03	Centerpiece	2.00	1.00	Ribbon
04	Dressed Doll	2.00	1.00	Ribbon
05	Pajamas	2.00	1.00	Ribbon
06	Remodeled Dress	2.00	1.00	Ribbon
07	Sampler	2.00	1.00	Ribbon
08	Cotton Skirt	2.00	1.00	Ribbon
09	Wool Skirt	2.00	1.00	Ribbon
10	Slacks or shorts	2.00	1.00	Ribbon
11	Slip	2.00	1.00	Ribbon
12	Smock	2.00	1.00	Ribbon
13	Sofa Pillow	2.00	1.00	Ribbon
14	Towel	2.00	1.00	Ribbon
15	Hat	2.00	1.00	Ribbon

Dept. 10 Miscellaneous

01	Crocheting Specimen	2.00	1.00	Ribbon
02	Knitting Specimen	2.00	1.00	Ribbon
03	Patchwork Specimen	2.00	1.00	Ribbon
04	Creative Stitchery Specimen	2.00	1.00	Ribbon
05	Crewel Work	2.00	1.00	Ribbon

NEW

Association of Connecticut Fairs • *CTAgFairs.org*

JUNIOR STATE QUILT CONTEST

Category:

WALL HANGING



Junior Quilt Contest Rules:

1. This contest is open to all residents of Connecticut.
2. All work must be completed by an individual quilt maker.
3. Work can be pieced by hand or by machine but applique must be done by hand.
4. Quilts must be either hand or machine quilted. No hand tied quilts.
5. Quilts may not be made from pre-cut quilt kits.
6. A quilt can only compete in the Association of Connecticut Fairs Quilt Contest once.
7. Participant must be between 7 and 17 years of age at time of judging.
8. Wall Hanging Quilt perimeter must measure a minimum of 64 inches.
9. Wall Hanging Quilt must include a sleeve for hanging.
10. Wall Hanging Quilt can be applique, or pieced. It can be hand or machine quilted, but not tied.

HOW TO ENTER: Enter a quilt at any participating fair that is a member of the Association of Connecticut Fairs.

The participating fair will award one winner with a rosette from the Association of Connecticut Fairs along with any awards the local fair provides. Each fair will submit that winning entry to the state contest. A quilt can be entered in as many fairs as a contestant wishes until it becomes eligible to go to the state contest.

STATE QUILT CONTEST: Once a quilt has won the State Quilt ribbon at a participating fair, it is eligible to be entered at the State Quilt Contest. The contest will be held November 6, 2021 at Double Tree by Hilton in Bristol, CT, 9:30-11:00 drop-off. The local fair secretary will contact the winner with information and will place reservations. The Riverton Fair will pay for its contest winner's banquet ticket plus one adult. The contest winner is responsible for the cost of any additional tickets for guests to attend.

The following prizes will be awarded in each category at the state contest:
1st Place: \$25.00 2nd Place: \$15.00 3rd Place: \$10.00

Dept. 10 Miscellaneous (continued)

06	Macrame	2.00	1.00	Ribbon
07	Ribbon Work	2.00	1.00	Ribbon
08	Stuffed Animal	2.00	1.00	Ribbon
09	Woven Pot Holders	2.00	1.00	Ribbon
10	Latch Hook Rug	2.00	1.00	Ribbon
11	Stamped and/or Embossed Work	2.00	1.00	Ribbon
12	Novelty	2.00	1.00	Ribbon
Dept.11	Knitted Sweater	2.00	1.00	Ribbon

Dept. 13 Floral

01	Asters, 6 stems	2.00	1.00	Ribbon
02	Bouquet Cut Flowers	2.00	1.00	Ribbon
03	Christmas Wreath	2.00	1.00	Ribbon
04	Dahlia, 1 specimen	2.00	1.00	Ribbon
05	Arrangement of Gourd Collection	2.00	1.00	Ribbon
06	Large Marigolds, 6 stems	2.00	1.00	Ribbon
07	French Marigolds, 6 stems	2.00	1.00	Ribbon
08	Nasturtiums, 6 flowers	2.00	1.00	Ribbon
09	Petunias, 6 flowers	2.00	1.00	Ribbon
10	Pansies, 6 flowers	2.00	1.00	Ribbon
11	Wild Flower Bouquet	2.00	1.00	Ribbon
12	Zinnias, 6 flowers	2.00	1.00	Ribbon
13	Miniature Bouquet, not over 4" high overall	2.00	1.00	Ribbon
Dept.14	Miniature Garden not over 10 square feet	3.00	2.00	Ribbon

Dept. 15 Hand Craft Work and Hobbies

One entry per category

01	Cabinet Work	2.00	1.00	Ribbon
02	Ceramics	2.00	1.00	Ribbon
03	Charcoal Drawing	2.00	1.00	Ribbon
04	Doll House	2.00	1.00	Ribbon
05	Hand Carved Work	2.00	1.00	Ribbon
06	Leather Work	2.00	1.00	Ribbon
07	Jewelry	2.00	1.00	Ribbon
08	Lego Display - <u>not to exceed 2'x2'</u>	2.00	1.00	Ribbon
09	Model Airplanes	2.00	1.00	Ribbon
10	Model Cars	2.00	1.00	Ribbon
11	Model Ships	2.00	1.00	Ribbon
12	Miscellaneous Models	2.00	1.00	Ribbon
13	Origami	2.00	1.00	Ribbon
14	Painting, Oil Color	2.00	1.00	Ribbon
15	Painting, Watercolor	2.00	1.00	Ribbon
16	Painting, Acrylic	2.00	1.00	Ribbon
17	Pen & Ink	2.00	1.00	Ribbon
18	Pencil Drawing	2.00	1.00	Ribbon
19	Poster	2.00	1.00	Ribbon
20	Tie Dyeing	2.00	1.00	Ribbon
21	Computer Art	2.00	1.00	Ribbon
22	Clay Sculpture	2.00	1.00	Ribbon
23	Pastel Drawing	2.00	1.00	Ribbon
24	Diorama - <u>not to exceed 3'x3'</u>	2.00	1.00	Ribbon
25	Other	2.00	1.00	Ribbon

Dept. 16 Collections

One collection per exhibitor. Space used not over 2' x2'

01	Collection of Animals	6.00	4.00	2.00
02	Collection of China Articles	6.00	4.00	2.00
03	Collection of Cloth Articles	6.00	4.00	2.00
04	Collection of Dolls	6.00	4.00	2.00
05	Collection of Glass Articles	6.00	4.00	2.00
06	Collection of Metal Articles	6.00	4.00	2.00
07	Collection of Paper Articles	6.00	4.00	2.00
08	Collection of Rocks & Minerals	6.00	4.00	2.00
09	Collection of Shells	6.00	4.00	2.00
10	Collection of Wooden Articles	6.00	4.00	2.00
11	Collection of Figures	6.00	4.00	2.00
12	Collection of Leather Articles	6.00	4.00	2.00
13	Collection of Sports Memorabilia	6.00	4.00	2.00
14	Collection of Insects	6.00	4.00	2.00
15	Collection of Other	6.00	4.00	2.00

Dept. 17 Jack O'Lantern Contest

01	Cut Out Pumpkin	4.00	3.00	2.00
02	Decorated Pumpkin	4.00	3.00	2.00
03	Scarecrow	5.00	3.00	2.00
	Maximum 6 feet tall. Must be free-standing.			

Dept. 19 Canned Fruit

Three jars per item must be submitted except for collections.

01	Applesauce	2.00	1.00	Ribbon
02	Apples	2.00	1.00	Ribbon
03	Blackberries	2.00	1.00	Ribbon
04	Blueberries	2.00	1.00	Ribbon
05	Cherries	2.00	1.00	Ribbon
06	Peaches	2.00	1.00	Ribbon
07	Pears	2.00	1.00	Ribbon
08	Plums	2.00	1.00	Ribbon
09	Black Raspberries	2.00	1.00	Ribbon
10	Red Raspberries	2.00	1.00	Ribbon
11	Strawberries	2.00	1.00	Ribbon
Dept.20	Collection, 3 jars, 3 varieties Berries	3.00	2.00	Ribbon
	Each variety in a collection must be named			
Dept.21	Collection, 5 jars, 5 varieties Fruit	3.00	2.00	Ribbon
	Each variety in a collection must be named			

Dept. 22 Canned Vegetables

Three jars per item must be submitted except for collections.

Quart or Pint Jars ONLY

01	Asparagus	2.00	1.00	Ribbon
02	Beets	2.00	1.00	Ribbon
03	Carrots	2.00	1.00	Ribbon
04	White Corn	2.00	1.00	Ribbon
05	Yellow Corn	2.00	1.00	Ribbon
06	Dandelion Greens	2.00	1.00	Ribbon
07	Lima Beans	2.00	1.00	Ribbon
08	Mincemeat	2.00	1.00	Ribbon
09	Peas	2.00	1.00	Ribbon
10	Spinach	2.00	1.00	Ribbon
11	Shelled Beans	2.00	1.00	Ribbon
12	Squash	2.00	1.00	Ribbon
13	String Beans	2.00	1.00	Ribbon
14	Succotash	2.00	1.00	Ribbon
15	Swiss Chard	2.00	1.00	Ribbon
16	Tomatoes	2.00	1.00	Ribbon
17	Tomato Puree	2.00	1.00	Ribbon
18	Vegetable Soup	2.00	1.00	Ribbon
19	Salsa	2.00	1.00	Ribbon
20	Other	2.00	1.00	Ribbon

Dept.23 Collection, 5 jars, 5 varieties Vegetables 3.00 2.00 Ribbon
Each variety in a collection must be named

Dept. 24 Pickles

Three jars per item must be submitted except for collections.

Quart, Pint or Half Pint Jars Only allowed

01	Beet	2.00	1.00	Ribbon
02	Bread & Butter	2.00	1.00	Ribbon
03	Cabbage	2.00	1.00	Ribbon
04	Catsup	2.00	1.00	Ribbon
05	Cauliflower	2.00	1.00	Ribbon
06	Chili Sauce	2.00	1.00	Ribbon
07	Chow Chow	2.00	1.00	Ribbon
08	Corn Relish	2.00	1.00	Ribbon
09	Cucumber, Sour	2.00	1.00	Ribbon
10	Cucumber, Sweet	2.00	1.00	Ribbon
11	Dill, Sour	2.00	1.00	Ribbon
12	Dill, Sweet	2.00	1.00	Ribbon
13	Icebox Bread & Butter	2.00	1.00	Ribbon
14	Mixes Sweet	2.00	1.00	Ribbon
15	Onions	2.00	1.00	Ribbon
16	Pepper Hash	2.00	1.00	Ribbon
17	Relish	2.00	1.00	Ribbon
18	String Beans	2.00	1.00	Ribbon
19	Zucchini Pickles	2.00	1.00	Ribbon
20	Zucchini Relish	2.00	1.00	Ribbon
21	Other	2.00	1.00	Ribbon

Dept.25 Collection, 5 jars, 5 varieties Pickles 3.00 2.00 Ribbon
Each variety in a collection must be named

Dept. 26 Jellies

Three jars per item must be submitted except for collections.

Exhibitors must use Std. 602 6 or 8 oz. jars / No paraffin or wax allowed

01 Apple	2.00	1.00	Ribbon
02 Apricot	2.00	1.00	Ribbon
03 Black Raspberry	2.00	1.00	Ribbon
04 Blueberry	2.00	1.00	Ribbon
05 Crabapple	2.00	1.00	Ribbon
06 Currant	2.00	1.00	Ribbon
07 Elderberry	2.00	1.00	Ribbon
08 Grape	2.00	1.00	Ribbon
09 Mint	2.00	1.00	Ribbon
10 Peach	2.00	1.00	Ribbon
11 Plum	2.00	1.00	Ribbon
12 Quince	2.00	1.00	Ribbon
13 Red Raspberry	2.00	1.00	Ribbon
14 Strawberry	2.00	1.00	Ribbon
15 Other Jelly	2.00	1.00	Ribbon

Dept. 27 Collection, 5 jars, 5 varieties Jellies 3.00 2.00 Ribbon

Each variety in a collection must be named

Dept. 28 Jams

Three jars per item must be submitted except for collections.

Exhibitors must use Std. 602 6 or 8 oz. jars / No paraffin or wax allowed

01 Apple Butter	2.00	1.00	Ribbon
02 Apricot	2.00	1.00	Ribbon
03 Blueberry	2.00	1.00	Ribbon
04 Blackberry	2.00	1.00	Ribbon
05 Black Raspberry	2.00	1.00	Ribbon
06 Peach	2.00	1.00	Ribbon
07 Pear Butter	2.00	1.00	Ribbon
08 Plum	2.00	1.00	Ribbon
09 Red Raspberry	2.00	1.00	Ribbon
10 Strawberry	2.00	1.00	Ribbon
11 Other Jam	2.00	1.00	Ribbon

Dept. 29 Collection, 3 jars, 3 varieties Jams 3.00 2.00 Ribbon

Each variety in a collection must be named

Dept. 30 Miscellaneous

01 Comb Honey - 3 jars	2.00	1.00	Ribbon
02 Honey, light - 3 one-pound jars	2.00	1.00	Ribbon
03 Honey, dark - 3 one-pound jars	2.00	1.00	Ribbon
04 Maple Sugar - one pound	2.00	1.00	Ribbon
05 Maple Syrup - 3 one-quart jars	2.00	1.00	Ribbon
06 White Eggs - one dozen	2.00	1.00	Ribbon
07 Brown Eggs - one dozen	2.00	1.00	Ribbon
08 Other Eggs - one dozen	2.00	1.00	Ribbon

Division Q - POULTRY

Superintendents:
Donald Keesler, Jr., 860-201-3105
Nicole Lago, 860-280-4746

Committee: Rachel Keesler, Hedy Porto, Mary Guilfoile

Entries must be mailed directly to:

**Donald Keesler, Jr.
309 Birge Park Road, Harwinton, CT 06791**

RULES (Please read carefully)

1. All poultry must be owned by the exhibitor.
2. All entries close **September 30** or as cage capacity is reached.
3. Judging will be by the APA Standard and will commence at 8:30 AM Saturday.
4. The barn will be open for receiving poultry on Friday from 3:00 - 8:00 PM.
5. Poultry originating within the state must come from healthy flocks with no evidence of contagious or infectious disease. All cages or crates must be cleaned and disinfected before and after each show. Poultry vaccinated within 30 days with a live virus vaccine will be prohibited from showing. OUT OF STATE POULTRY: All poultry must test negative for pullorum within 12 months prior to their first show date and be accompanied by such certification. All cages and crates must be cleaned and disinfected before and after each show. In addition, all poultry must comply with the Department of Agriculture Avian Influenza requirements by originating from AI-Free flocks or be tested for AI within 30 days of entry and have certification of such. No poultry from any areas of any state having Avian Influenza may enter Connecticut. Poultry vaccinated within 30 days with a live vaccine will be prohibited from showing.
6. Exhibitors over 12 years of age will pay **\$7.00 admission fee**. Fee must accompany entry form. Passes will be given out by the committee.
7. Junior and Senior Exhibitors must pay an entry fee of 50 cents per bird or they will not be accepted.
8. No advertising will be permitted until after judging is completed, then neat cards may be displayed.
9. There will be a separate show for Junior Exhibitors (Jr. - age 17 & under / Sr. - age 18 & up)
10. A maximum of 30 birds per family will be allowed.

		<u>First</u>	<u>Second</u>	<u>Third</u>
Dept. 1	Bantams	\$6.00	\$5.00	\$4.00
	1. Cock	6.00	5.00	4.00
	2. Hen	6.00	5.00	4.00
	3. Cockerel	6.00	5.00	4.00
	4. Pullet	6.00	5.00	4.00
Dept. 2	Standard/Large Fowl	\$6.00	\$5.00	\$4.00
	1. Cock	6.00	5.00	4.00
	2. Hen	6.00	5.00	4.00
	3. Cockerel	6.00	5.00	4.00
	4. Pullet	6.00	5.00	4.00
Dept. 3	Turkeys, Ducks, Geese	\$6.00	\$5.00	\$4.00
	1. Cock	6.00	5.00	4.00
	2. Hen	6.00	5.00	4.00
	3. Cockerel	6.00	5.00	4.00
	4. Pullet	6.00	5.00	4.00

Trophies will be awarded in both Junior and Senior Divisions for
 Best Standard • Best Bantam • Best Waterfowl • Best Turkey

The Dominic Porto Memorial Trophy

will be awarded each year to the
 Riverton Fair's Best Junior Showman



POULTRY SHOW ENTRY FORM

MAIL ENTRY FORM & CHECK DIRECTLY TO:

Donald Keesler, Jr., 309 Birge Park Road, Harwinton, CT 06791

All animals' health papers must be available for inspection upon arrival.

Name of Exhibitor: _____

Address: _____

City: _____ State: _____ Zip: _____

Phone: _____ Email: _____

Jr. Exh. mo/yr of birth: ____/____ (required). All Juniors pay 50 cents per animal. Adult Exhibitors enclose **\$7.00** entry fee for maximum of three animals; then 50 cents each per additional animal. DO NOT SEND CASH.

Make all checks payable to The Riverton Fair.

Dept.	Sex	Breed

\$7.00 entry fee for any one exhibitor over the age of 12 _____

Entry fee per bird for exhibitors 12 years and under: \$.50 X _____ = _____

Entry fee per addtl bird, over 3, for exhibitors over 12 yrs: \$.50 X _____ = _____

Total Fee \$ _____

Division R GRANGE & CLUB EXHIBITS

Dept. 1 Grange Exhibit

1. Space limited to 10 feet frontage.
2. Table space is provided. If floor space is required, please specify on entry form and see a committee member for spot before setting up.
3. Everything in exhibit must be property of Grange members exhibiting.
4. Any products or articles raised or made on a Grange farm or home may be included. Home products including needlework, canned goods, bakery and food are included.
5. All Grange exhibits must have a Grange theme.
6. Articles should be labeled when possible.
7. Exhibits should be attractive.
8. The name of the Grange must not be displayed until after judging.
9. Granges should pay the \$7.00 entry fee and will receive one exhibitor pass, but may also send \$7.00 each for additional passes, good for all three days, for up to five members involved.

Dept. 2 Club Exhibit -- Ages 16 & up

Club must consist of no less than five bona fide members ages 16 & older. Articles included in display may be sold after judging and must remain until 5:00 PM Sunday.

Dept. 3 Junior Club Exhibit -- Ages 15 & under

Club must consist of no less than five bona fide members ages 15 & under. Articles included in display may be sold after judging and must remain until 5:00 PM Sunday.

Judging Criteria for all Club and Grange Exhibits:

Theme	30 points
Quality	20 points
Variety	15 points
Attractiveness	15 points
Arrangement	10 points
Originality	<u>10 points</u>
TOTAL	100 points

First Prize: \$25.00 • Second Prize: \$20.00 • Third Prize: \$15.00

Division S - WOODCHOPPING, SAWING & AXE THROWING

Chair: Shannon Strong 860-868-0693

Saturday and Sunday 10:00 AM

All competitors must provide their own saws and axes.

	<u>1st</u>	<u>2nd</u>	<u>3rd</u>	<u>4th</u>	<u>5th</u>	<u>6th</u>
Standard Chopping	\$30	\$25	\$20	\$15	\$10	\$ 5
Cross Cut Sawing (per team)	\$60	\$50	\$40	\$30	\$20	\$10
Bow Sawing	\$30	\$25	\$20	\$15	\$10	\$ 5
Axe Throwing	\$30	\$25	\$20	\$15	\$10	\$ 5
Jack & Jill Cross Cut (per team)	\$60	\$50	\$40	\$30	\$20	\$10

The Cal Strong Memorial Trophy

will be awarded at the Judge's discretion to someone who perpetuates the "Spirit of the Sport".

• • •



THE BARNYARD

Educational farm display
with live animals

• • •

PIE-EATING CONTEST

Saturday and Sunday (weather permitting)

Held at 3:00 PM in front of the Bandstand.

Sign up in the Secretary's Barn any time during the day.

Limited to the first 18 registrants in each category each day.

Youth: 15 years of age and under

Adults: 16 years of age and older

Division T - GARDEN TRACTOR PULL

Friday Evening starting at 6 PM

Registration closes 1/2 hour before pull begins. Please be on time.

Shawn Uscilla (203) 410-2118 or Fire23su@aol.com

Steve Palinkas (860) 921-3918 / (860) 379-2155 after 5

TWO ADULTS PER TRACTOR WILL BE LET IN FREE. ALL OTHERS PAY

GENERAL RULES - ALL CLASSES

KIDS UNDER THE AGE OF 14 WILL NOT BE ALLOWED IN THE PIT EXCEPT WHEN PULLING

1. A full pull is 8 feet. If your first pull is under 2 feet, you have the option to try again. NOTE: This is on your first pull only.
2. Boundary lines will be 10 feet apart. If tractor or stone boat hits the boundary lines, the driver and the tractor will be disqualified.
3. NO JERKING STONE BOAT. You must tighten the chain before pulling.
4. Drivers must remain seated IN THE SEAT!!! Not on the back edge of the seat. Drivers must keep one hand on the steering wheel at all times while pulling. No leaning back further than the back edge of the seat.
5. ADULTS - only one person per tractor, per class. Two children from immediate family per tractor may pull in same class.
6. Kids 6 - 14 yrs old must be able to safely operate tractor to the satisfaction of our officials. Kids must also have an adult coach at ALL TIMES. Coaches must remain outside of the boundary lines at the time of the pull.
7. Officials will "class" and check all the tractors. Their judgments are final.
8. No horseplay or alcoholic beverages allowed. No passengers on the tractor.
9. NO CHEATING! CHEAT ONCE: WARNING. CHEAT TWICE: MISS TWO PULLS. CHEAT 3 TIMES: KIDS OUT FOR THE SEASON / ADULTS OUT PERMANENTLY.
10. All tractors must have clevis or hole in draw bar large enough to accept hook from stone boat. Hole must be at least 2 inches in diameter.
11. Class winners will be allowed to move up to next class pull for fun only, NOT for ribbons.
12. Pulling committee and officials reserve the right to add any additional rules or correct any problems that happen at a pull.
13. After pulling, upon returning your tractors to your vehicles: no speeding through the grounds or parking lots, no driving around the grounds. Take your tractor to the truck or trailer and load. NO PASSENGERS ON YOUR TRACTOR ON GROUNDS OR IN PARKING LOT.

GARDEN TRACTOR CLASSES

- CLASS 1 - Stock. Kids 6 - 10 yrs old, up to 12 hp with 23/10.5/12 or smaller tires
- CLASS 2 - Stock. Kids 11 - 14 yrs old, up to 12 hp with 23/10.5/12 or smaller tires
- CLASS 3 - Stock. Kids 6 -14 yrs old, up to 14 - 20 hp with 26/12/12 or smaller tires
- CLASS 3G - GRAVELY. Kids 6 - 14 yrs old, with 26/10.5/12 or smaller tires
- CLASS 4 -Stock. Adult, 15+ yrs old, with 23/10.5/12 or smaller tires
- CLASS 5 - Stock. Adult, 15+ yrs old, 12 - 16 hp with 23/10.5/12 or smaller tires
- CLASS 6 - Stock. Adult, 15+ yrs old, 20 hp with 26/12/12 or smaller tires
- CLASS 6G - GRAVELY. Adult, 15+ yrs old, with 26/12/12 or smaller tires
- CLASS 7 - Stock Big Wheels. Kids 6 - 14 yrs old, up to 20 hp with 16 - 24" tires, no larger than 8.3 x 24 or 9.5
- CLASS 8 - Stock Big Wheels. Adult 15+ yrs old, up to 20 hp with 16 - 24" tires, no larger than 8.3 x 24 or 9.5
- CLASS 9 - Super Stock. Adult 15+ yrs old

IMPORTANT: The age of the puller on May 1st will determine the class he/she will pull for the entire season.

NOTE: Tractors with factory stock 15" rims will be classed on an individual basis. FYI: A 23/10.5/12 tire is 2' tall, 10.5" wide, and on a 12" rim. A 26/12/12 is 26" tall, 12" wide, and on a 12" rim.

STOCK GARDEN TRACTORS:

1. Stock Garden tractors up to 20hp, 1 or 2 cylinders, gas or electric. Engine cannot run over 3600 rpm.
 2. ALL tractors must have a rigid draw bar. Height for Big Wheels, Classes 7 & 8 will be 12 inches from the ground. Classes 7 & 8 Economy tractors will have a stock hitch that was original equipment or one built to original specs. NO BOLT ON DRAW BARS behind the rear axle.
Draw bars must be made of 1/2" steel and must be bolted to original hitch 4"x4". Must have 1/2" of steel behind hole. May use 3/4" washer to raise hitch to 1" below center of axle.
 3. NO LOCKED REAR ENDS PERMITTED. THOSE EQUIPPED CANNOT USE THEM. WE WILL BE WATCHING!!!
 4. WHEEL WEIGHTS: CLASSES 1 - 8
 - 8" - 12" (CAN BE HOMEMADE) NOT TO EXCEED 75 LBS PER WHEEL.
 - BIG WHEELS: manufactured only; not to exceed 140 lbs per wheel. NOTE: Weights may be weighed any time at the discretion of an official. They must be removable.
 5. Under mounted mowers are allowed. No chains over 10" long to hold mower deck to tractor. NO OTHER ATTACHMENTS.
 6. No cut tires; no tire chains; no dual wheels. No 4x4s, crawlers, steel wheels, pit bulls, C-peks. No professional pulling tires.
- NEW RULE AFTER HAVING A TRACTOR TIP OVER BACKWARD LAST SEASON:**
7. ALL TRACTORS CLASSES 1 - 9 MUST BE EQUIPPED WITH WHEELIE BARS that are strong enough to support tractor. Bars must be made of 2" sq. tubing, 1/8" thick, or flat stock 1/4 x 2 1/4 max. Brace 1 1/4 x 1 1/4 x 1/8 angle. Cross brace must not interfere with hitch or chain. Bars must not extend more than 4" behind the exterior of the tire, not more than 6" from the ground. They must have wheels (not steel) or flat pads.
 9. Cub Cadets: MUST have a shield to deflect any flying parts to the ground in event of a mishap. Shield must be made of 16 gauge steel or 1/8" aluminum and surround the clutch housing on top and both sides.
 10. STOCK SEATS ONLY. NO CAR, TRUCK, BUCKET SEATS ETC.
DRIVER MUST SIT IN THE SEAT. NO SITTING ON THE REAR EDGE OF THE SEAT OR LEANING BACK FURTHER THAN THE REAR OF THE SEAT. NO BOUNCING. ONE HAND ON THE WHEEL AT ALL TIMES. WE WILL BE WATCHING!!
 11. **FLAGRANT VIOLATORS OF ANY RULES WILL NOT PULL PER DECISION OF THE OFFICIAL.**

SUPER STOCK - CLASS 9 - RULES

1. Garden tractors up to 20 hp, one or two cylinder, 4 cycle, gasoline engines.
2. Frame cannot be lengthened more than 4 inches. Hood cannot be raised more than 3 inches.
3. Tractors must have wheelie bars that are strong enough to support the tractor, must not extend more than 4 inches behind the exterior of the tire and will be no more than 6" from the ground.
See #7 of Stock Garden Tractor rules for requirements.
4. All tractors must have a rigid draw bar. Maximum draw bar height will be 14". Bars must not extend rearward more than 15" from the center of the axle. Rear engine tractors being the exception, with rigid bars being as close as possible to the engine.
5. Maximum engine RPM must not exceed 4000 RPM and may be checked at any time. All tractors must have sufficient shielding of belts, chains, clutches, etc., to deflect any flying parts to the ground.
6. Any type of tire may be used. Tires can be modified. Maximum tire size will be 31/15.50/15.
No dual wheels, no tire chains or studs.
8. A tractor that pulls in Super Stock class cannot pull in any other class. Tractor may not weight more than 1700 lbs. with 31x15.5x15 tires, and 1800 lbs. with 26x12.5x12 tires.
Weight may be added to achieve these weights. NOTE: Super stock tractors will be weighed. There will be a one-time fee for the scale to be paid by the puller. Tractors may be rechecked at any time at a later pull at no fee and at the discretion of the official.

RIVERTON FAIR

WOMEN'S SKILLET THROW

Saturday, October 9 at 6:30 PM in the Pulling Ring

Four age brackets: 16-29 30-45 46-63 64 & over

Rules:

1. Competition is open to all women over the age of 16.
2. Skillets will be provided by the fair.
3. Throws are to be straight out and underhand.
4. Practice throws will be allowed before the competition starts.
5. Each contestant will be allowed two throws, the better of the two will count.
6. Throw is measured at point where the skillet hits the course.
7. Crossing the foul line will result in disqualification of that throw.
8. Contestants should be at the Skillet Throw area at least 10 minutes prior to the start of the competition.
9. Fair officials will have final say in any dispute.
10. Throw off for Top Winner will be best of two throws of 1st place winner in each age group.



Litchfield County Council of Fairs

WOMEN'S SKILLET THROW FINALS

Sunday, October 10 at 2:00 PM in the Pulling Ring

Rules:

1. Competition is for top winners in participating LCCF Women's Skillet Throws.
2. Skillets will be provided by the fair.
3. Throws are to be straight out and underhand.
4. Each contestant will be allowed two throws, the better of the two will count.
5. Throw is measured at point where the skillet hits the course.
6. Crossing the foul line will result in disqualification of that throw.
7. Contestants should be at the Skillet Throw area at least 10 minutes prior to the start of the competition.
8. Fair officials will have final say in any dispute.

UNION AGRICULTURAL SOCIETY
OF BARKHAMSTED, COLEBROOK AND HARTLAND INC.
OFFICERS AND SUPERINTENDENTS FOR 2021-2022

President

Matthew Cook • cook.matthew@sbcglobal.net

Vice President

Don Lemelin

Secretary

Christine Schmidt • wcwh@aol.com • rivertonfair@gmail.com
PO Box 303, Riverton, CT 06065 • 860-379-0060

Treasurer

Rachel Boni

Assistant Treasurer

Christine Schmidt

Superintendent of Concessions

Marie Gillen • LGillen224@gmail.com
PO Box 306, Riverton, CT 06065 • 860-307-2601

Directors

Willi Schmidt for Barkhamsted
Walter Saramak for Colebrook
Jonathan Lynch for Hartland
Ben Palinkas for Winchester

Director at Large

Al Jones

Secretary of Ribbons & Awards

Christine Schmidt

Auditor

Darcy Anderson-Abbott

Marshal

Scott Goodell

Superintendent of Grounds

Willi Schmidt

Superintendent of Electricity

Greg Delaney

Superintendent of Plumbing

Bill Heacox

Publicity

Christine Schmidt

Superintendent of Committees

Christine Schmidt

